

Product Name: EF-Tu Rabbit Polyclonal Antibody
Catalog #: APRab10329



Summary

Production Name	EF-Tu Rabbit Polyclonal Antibody
Description	Rabbit Polyclonal Antibody
Host	Rabbit
Application	IHC,ELISA
Reactivity	Human,Mouse,Rat

Performance

Conjugation	Unconjugated
Modification	Unmodified
Isotype	IgG
Clonality	Polyclonal
Form	Liquid
Storage	Store at 4°C short term. Aliquot and store at -20°C long term. Avoid freeze/thaw cycles.
Buffer	Liquid in PBS containing 50% glycerol, 0.5% BSA and 0.02% New type preservative N.
Purification	Affinity purification

Immunogen

Gene Name	TUFM
Alternative Names	TUFM; Elongation factor Tu; mitochondrial; EF-Tu; P43
Gene ID	7284.0
SwissProt ID	P49411.The antiserum was produced against synthesized peptide derived from human TUFM. AA range:301-350

Application

Dilution Ratio	IHC 1:100-1:300 ELISA: 1:40000
Molecular Weight	50kD

Background

This gene encodes a protein which participates in protein translation in mitochondria. Mutations in this gene have been

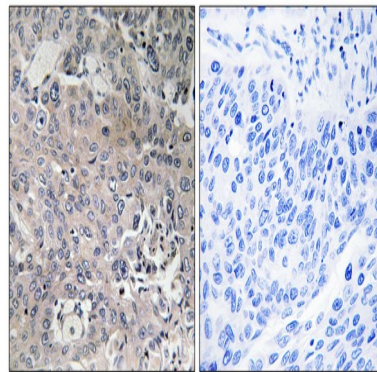
Product Name: EF-Tu Rabbit Polyclonal Antibody
Catalog #: APRab10329



associated with combined oxidative phosphorylation deficiency resulting in lactic acidosis and fatal encephalopathy. A pseudogene has been identified on chromosome 17. [provided by RefSeq, Jul 2008],disease:Defects in TUFM are the cause of combined oxidative phosphorylation deficiency type 4 (COXPD4) [MIM:610678]. COXPD4 is characterized by neonatal lactic acidosis, rapidly progressive encephalopathy, severely decreased mitochondrial protein synthesis, and combined deficiency of mtDNA-related mitochondrial respiratory chain complexes.,function:This protein promotes the GTP-dependent binding of aminoacyl-tRNA to the A-site of ribosomes during protein biosynthesis.,similarity:Belongs to the GTP-binding elongation factor family. EF-Tu/EF-1A subfamily.,

Research Area

Image Data



Immunohistochemistry analysis of paraffin-embedded human breast carcinoma tissue, using TUFM Antibody. The picture on the right is blocked with the synthesized peptide.

Note

For research use only.