

---

## Summary

<b>Production Name</b>	EF-2 Rabbit Polyclonal Antibody
<b>Description</b>	Rabbit Polyclonal Antibody
<b>Host</b>	Rabbit
<b>Application</b>	IF,IHC,WB,ELISA
<b>Reactivity</b>	Human,Mouse,Rat

## Performance

<b>Conjugation</b>	Unconjugated
<b>Modification</b>	Unmodified
<b>Isotype</b>	IgG
<b>Clonality</b>	Polyclonal
<b>Form</b>	Liquid
<b>Storage</b>	Store at 4°C short term. Aliquot and store at -20°C long term. Avoid freeze/thaw cycles.
<b>Buffer</b>	Liquid in PBS containing 50% glycerol, 0.5% BSA and 0.02% New type preservative N.
<b>Purification</b>	Affinity purification

## Immunogen

<b>Gene Name</b>	EEF2
<b>Alternative Names</b>	EEF2; EF2; Elongation factor 2; EF-2
<b>Gene ID</b>	1938.0
<b>SwissProt ID</b>	P13639.The antiserum was produced against synthesized peptide derived from human eEF2. AA range:31-80

## Application

<b>Dilution Ratio</b>	WB 1:500 - 1:2000. IHC 1:100 - 1:300. IF 1:200 - 1:1000. ELISA: 1:5000. Not yet tested in other applications.
<b>Molecular Weight</b>	100kD

**Product Name: EF-2 Rabbit Polyclonal Antibody**  
**Catalog #: APRab10318**



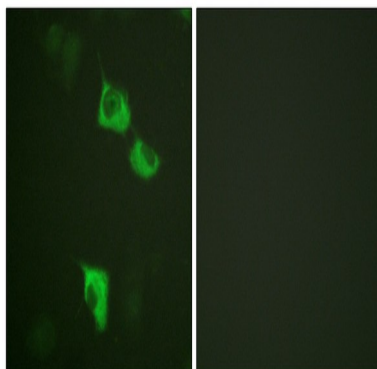
## Background

This gene encodes a member of the GTP-binding translation elongation factor family. This protein is an essential factor for protein synthesis. It promotes the GTP-dependent translocation of the nascent protein chain from the A-site to the P-site of the ribosome. This protein is completely inactivated by EF-2 kinase phosphorylation. [provided by RefSeq, Jul 2008],function:This protein promotes the GTP-dependent translocation of the nascent protein chain from the A-site to the P-site of the ribosome.,PTM:Diphthamide is 2-[3-carboxyamido-3-(trimethyl-ammonio)propyl]histidine. Diphthamide can be ADP-ribosylated by diphtheria toxin and by Pseudomonas exotoxin A.,PTM:Phosphorylation by EF-2 kinase completely inactivates EF-2.,similarity:Belongs to the GTP-binding elongation factor family. EF-G/EF-2 subfamily.,subunit:Component of the mRNA surveillance SURF complex, at least composed of ERF1, ERF3 (ERF3A or ERF3B), EEF2, UPF1/RENT1, SMG1, SMG8 and SMG9.,

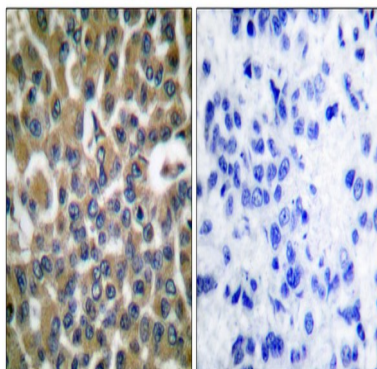
## Research Area

AMPK

## Image Data

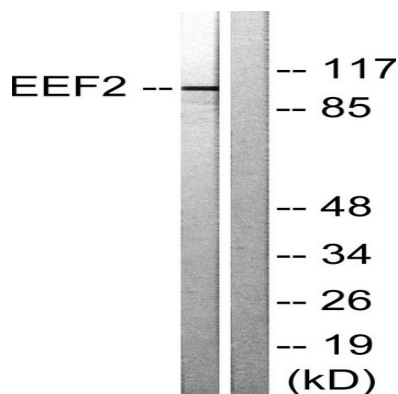


Immunofluorescence analysis of HUVEC cells, using eEF2 Antibody. The picture on the right is blocked with the synthesized peptide.

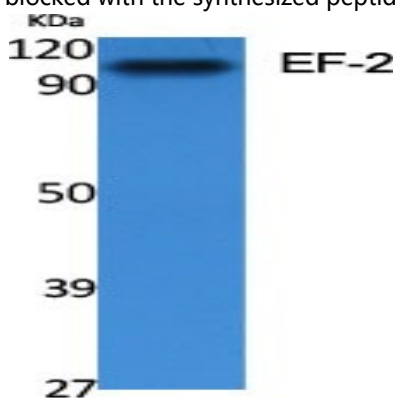


Immunohistochemistry analysis of paraffin-embedded human breast carcinoma tissue, using eEF2 Antibody. The picture on the right is blocked with the synthesized peptide.

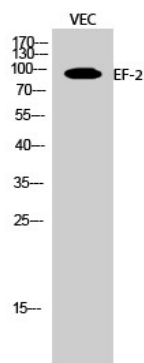
**Product Name: EF-2 Rabbit Polyclonal Antibody**  
**Catalog #: APRab10318**



Western blot analysis of lysates from NIH/3T3 cells, treated with serum 10% 30', using eEF2 Antibody. The lane on the right is blocked with the synthesized peptide.



Western Blot analysis of various cells using EF-2 Polyclonal Antibody diluted at 1: 2000



Western Blot analysis of VEC cells using EF-2 Polyclonal Antibody diluted at 1: 2000

## Note

For research use only.