

Product Name: EF-1 β Rabbit Polyclonal Antibody
Catalog #: APRab10317



Summary

Production Name	EF-1 β Rabbit Polyclonal Antibody
Description	Rabbit Polyclonal Antibody
Host	Rabbit
Application	WB,ELISA
Reactivity	Human,Mouse,Rat

Performance

Conjugation	Unconjugated
Modification	Unmodified
Isotype	IgG
Clonality	Polyclonal
Form	Liquid
Storage	Store at 4°C short term. Aliquot and store at -20°C long term. Avoid freeze/thaw cycles.
Buffer	Liquid in PBS containing 50% glycerol, 0.5% BSA and 0.02% New type preservative N.
Purification	Affinity purification

Immunogen

Gene Name	EEF1B2
Alternative Names	EEF1B2; EEF1B; EF1B; Elongation factor 1-beta; EF-1-beta
Gene ID	1933.0
SwissProt ID	P24534.The antiserum was produced against synthesized peptide derived from human EF-1beta. AA range:83-132

Application

Dilution Ratio	WB 1:500 - 1:2000. ELISA: 1:20000
Molecular Weight	24kD

Background

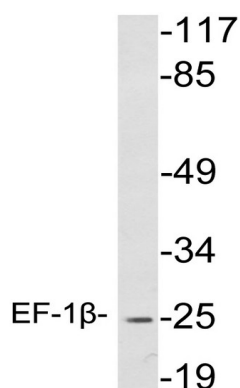
Product Name: EF-1 β Rabbit Polyclonal Antibody
Catalog #: APRab10317



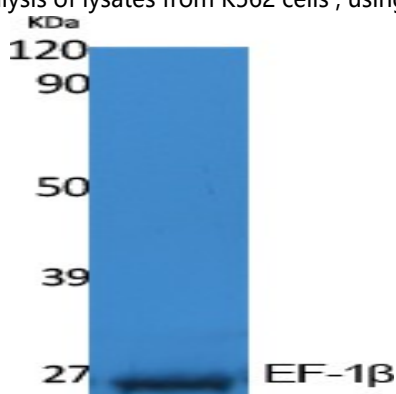
This gene encodes a translation elongation factor. The protein is a guanine nucleotide exchange factor involved in the transfer of aminoacylated tRNAs to the ribosome. Alternative splicing results in three transcript variants which differ only in the 5' UTR. [provided by RefSeq, Jul 2008],function:EF-1-beta and EF-1-delta stimulate the exchange of GDP bound to EF-1-alpha to GTP.,PTM:Phosphorylation affects the GDP/GTP exchange rate.,similarity:Belongs to the EF-1-beta/EF-1-delta family.,similarity:Contains 1 GST C-terminal domain.,subunit:EF-1 is composed of 4 subunits: alpha, beta, delta, and gamma.,

Research Area

Image Data



Western blot analysis of lysates from K562 cells , using EF-1 β antibody.



Western Blot analysis of extracts from K562 cells, using EF-1 β Polyclonal Antibody.. Secondary antibody was diluted at 1:20000

Note

For research use only.