

---

## Summary

<b>Production Name</b>	EF-1 $\gamma$ Rabbit Polyclonal Antibody
<b>Description</b>	Rabbit Polyclonal Antibody
<b>Host</b>	Rabbit
<b>Application</b>	WB,ELISA
<b>Reactivity</b>	Human,Mouse,Rat

## Performance

<b>Conjugation</b>	Unconjugated
<b>Modification</b>	Unmodified
<b>Isotype</b>	IgG
<b>Clonality</b>	Polyclonal
<b>Form</b>	Liquid
<b>Storage</b>	Store at 4°C short term. Aliquot and store at -20°C long term. Avoid freeze/thaw cycles.
<b>Buffer</b>	Liquid in PBS containing 50% glycerol, 0.5% BSA and 0.02% New type preservative N.
<b>Purification</b>	Affinity purification

## Immunogen

<b>Gene Name</b>	EEF1G
<b>Alternative Names</b>	EEF1G; EF1G; Elongation factor 1-gamma; EF-1-gamma; eEF-1B gamma
<b>Gene ID</b>	1937.0
<b>SwissProt ID</b>	P26641.The antiserum was produced against synthesized peptide derived from human EEF1G. AA range:101-150

## Application

<b>Dilution Ratio</b>	WB 1:500 - 1:2000. ELISA: 1:20000. Not yet tested in other applications.
<b>Molecular Weight</b>	55kD

## Background

---

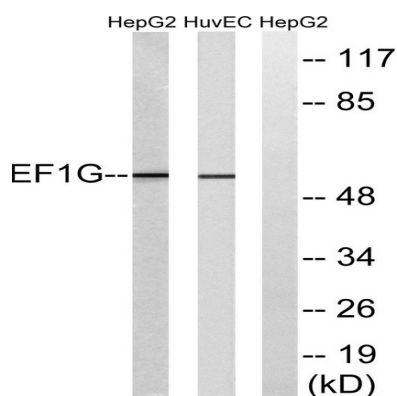
**Product Name: EF-1  $\gamma$  Rabbit Polyclonal Antibody**  
**Catalog #: APRab10313**



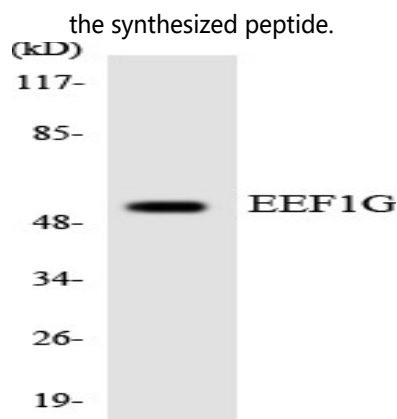
eukaryotic translation elongation factor 1 gamma (EEF1G) Homo sapiens This gene encodes a subunit of the elongation factor-1 complex, which is responsible for the enzymatic delivery of aminoacyl tRNAs to the ribosome. This subunit contains an N-terminal glutathione transferase domain, which may be involved in regulating the assembly of multisubunit complexes containing this elongation factor and aminoacyl-tRNA synthetases. [provided by RefSeq, Jul 2008],function:Probably plays a role in anchoring the complex to other cellular components.,similarity:Contains 1 EF-1-gamma C-terminal domain.,similarity:Contains 1 GST C-terminal domain.,similarity:Contains 1 GST N-terminal domain.,subunit:EF-1 is composed of four subunits: alpha, beta, delta, and gamma.,tissue specificity:Highly expressed in pancreatic tumor tissue and to a lesser extent in normal kidney, intestine, pancreas, stomach, lung, brain, spleen and liver.,

## Research Area

## Image Data

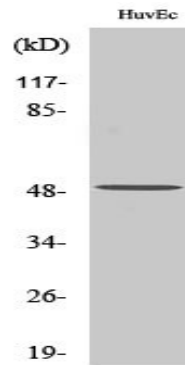


Western blot analysis of lysates from HUVEC and HepG2 cells, using EEF1G Antibody. The lane on the right is blocked with the synthesized peptide.



Western blot analysis of the lysates from HepG2 cells using EEF1G antibody.

**Product Name: EF-1  $\gamma$  Rabbit Polyclonal Antibody**  
**Catalog #: APRab10313**



Western Blot analysis of various cells using EF-1  $\gamma$  Polyclonal Antibody diluted at 1: 1000

**Note**

For research use only.