

Summary

| | |
|------------------------|----------------------------------|
| Production Name | eEF2K Rabbit Polyclonal Antibody |
| Description | Rabbit Polyclonal Antibody |
| Host | Rabbit |
| Application | IHC, WB, |
| Reactivity | Human, Rat |

Performance

| | |
|---------------------|--|
| Conjugation | Unconjugated |
| Modification | Unmodified |
| Isotype | IgG |
| Clonality | Polyclonal |
| Form | Liquid |
| Storage | Store at 4°C short term. Aliquot and store at -20°C long term. Avoid freeze/thaw cycles. |
| Buffer | Liquid in PBS containing 50% glycerol, 0.5% BSA and 0.02% New type preservative N. |
| Purification | Affinity purification |

Immunogen

| | |
|--------------------------|--|
| Gene Name | EEF2K |
| Alternative Names | EEF2K; Eukaryotic elongation factor 2 kinase; eEF-2 kinase; eEF-2K; Calcium/calmodulin-dependent eukaryotic elongation factor 2 kinase |
| Gene ID | 29904.0 |
| SwissProt ID | O00418. The antiserum was produced against synthesized peptide derived from human eEF2K. AA range:331-380 |

Application

| | |
|-------------------------|--|
| Dilution Ratio | WB 1:500 - 1:2000. IHC 1:100 - 1:300. ELISA: 1:20000.. |
| Molecular Weight | 105kD |

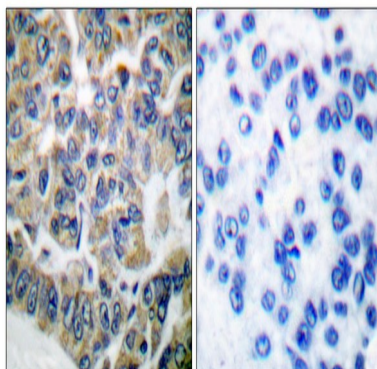
Background

This gene encodes a highly conserved protein kinase in the calmodulin-mediated signaling pathway that links activation of cell surface receptors to cell division. This kinase is involved in the regulation of protein synthesis. It phosphorylates eukaryotic elongation factor 2 (EEF2) and thus inhibits the EEF2 function. The activity of this kinase is increased in many cancers and may be a valid target for anti-cancer treatment. [provided by RefSeq, Jul 2008],catalytic activity:ATP + [elongation factor 2] = ADP + [elongation factor 2] phosphate.,enzyme regulation:Undergoes calcium/calmodulin-dependent intramolecular autophosphorylation, and this results in it becoming partially calcium/calmodulin-independent.,function:Phosphorylates eukaryotic elongation factor-2. Binds calmodulin.,similarity:Belongs to the protein kinase superfamily. Alpha-type protein kinase family.,similarity:Contains 1 alpha-type protein kinase domain.,subunit:Monomer or homodimer .,

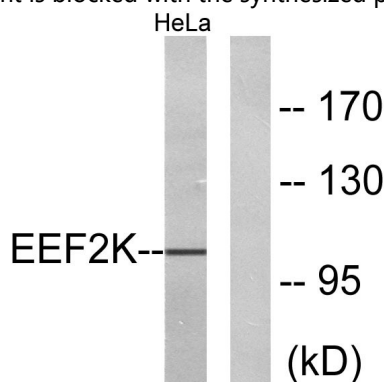
Research Area

AMPK

Image Data

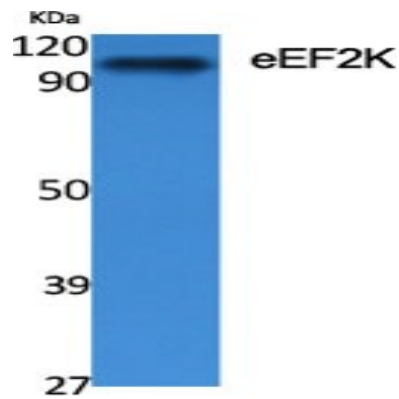


Immunohistochemistry analysis of paraffin-embedded human breast carcinoma tissue, using eEF2K Antibody. The picture on the right is blocked with the synthesized peptide.

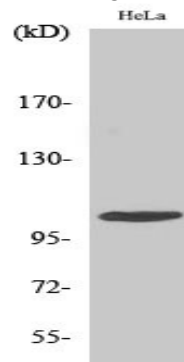


Western blot analysis of lysates from HeLa cells, treated with serum 10% 15', using eEF2K Antibody. The lane on the right is blocked with the synthesized peptide.

Product Name: eEF2K Rabbit Polyclonal Antibody
Catalog #: APRab10310



Western Blot analysis of various cells using eEF2K Polyclonal Antibody diluted at 1: 500



Western Blot analysis of HeLa cells using eEF2K Polyclonal Antibody diluted at 1: 500

Note

For research use only.