

---

## Summary

|                        |                                 |
|------------------------|---------------------------------|
| <b>Production Name</b> | EEA1 Rabbit Polyclonal Antibody |
| <b>Description</b>     | Rabbit Polyclonal Antibody      |
| <b>Host</b>            | Rabbit                          |
| <b>Application</b>     | WB,ELISA                        |
| <b>Reactivity</b>      | Human,Mouse                     |

## Performance

|                     |  |
|---------------------|--|
| <b>Conjugation</b>  | Unconjugated   |
| <b>Modification</b> | Unmodified   |
| <b>Isotype</b>      | IgG  |
| <b>Clonality</b>    | Polyclonal   |
| <b>Form</b>         | Liquid   |
| <b>Storage</b>      | Store at 4°C short term. Aliquot and store at -20°C long term. Avoid freeze/thaw cycles. |
| <b>Buffer</b>       | Liquid in PBS containing 50% glycerol, 0.5% BSA and 0.02% New type preservative N.       |
| <b>Purification</b> | Affinity purification  |

## Immunogen

|                          |  |
|--------------------------|--|
| <b>Gene Name</b>         | EEA1   |
| <b>Alternative Names</b> | EEA1; ZFYVE2; Early endosome antigen 1; Endosome-associated protein p162; Zinc finger FYVE domain-containing protein 2 |
| <b>Gene ID</b>           | 8411.0   |
| <b>SwissProt ID</b>      | Q15075.The antiserum was produced against synthesized peptide derived from human EEA1. AA range:205-254                |

## Application

|                         |                                   |
|-------------------------|-----------------------------------|
| <b>Dilution Ratio</b>   | WB 1:500 - 1:2000. ELISA: 1:20000 |
| <b>Molecular Weight</b> | 162kD                             |

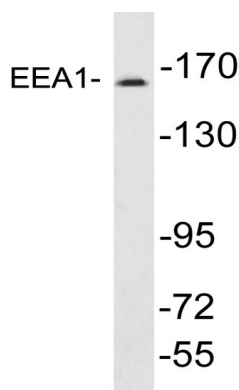
## Background

disease:Antibodies against EEA1 are found in sera from patients with subacute cutaneous lupus erythematosus and other autoimmune diseases.,domain:The FYVE-type zinc finger domain mediates interactions with phosphatidylinositol 3-phosphate.,function:Binds phospholipid vesicles containing phosphatidylinositol 3-phosphate and participates in endosomal trafficking.,similarity:Contains 1 C2H2-type zinc finger.,similarity:Contains 1 FYVE-type zinc finger.,subunit:Homodimer. Binds STX6. Binds RAB5A, RAB5B, RAB5C and RAB22A that have been activated by GTP-binding.,disease:Antibodies against EEA1 are found in sera from patients with subacute cutaneous lupus erythematosus and other autoimmune diseases.,domain:The FYVE-type zinc finger domain mediates interactions with phosphatidylinositol 3-phosphate.,function:Binds phospholipid vesicles containing phosphatidylinositol 3-phosphate and participates in endosomal trafficking.,similarity:Contains 1 C2H2-type zinc finger.,similarity:Contains 1 FYVE-type zinc finger.,subunit:Homodimer. Binds STX6. Binds RAB5A, RAB5B, RAB5C and RAB22A that have been activated by GTP-binding.,

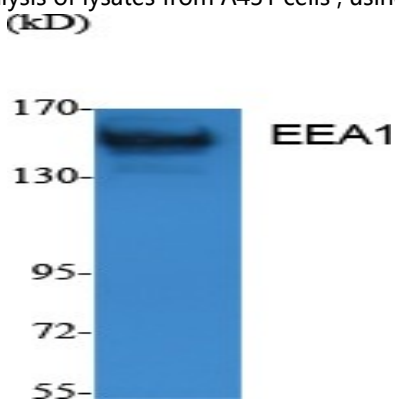
## Research Area

Endocytosis;

## Image Data



Western blot analysis of lysates from A431 cells, using EEA1 antibody.



Western Blot analysis of extracts from K562 cells, using EEA1 Polyclonal Antibody.. Secondary antibody was diluted at

**Product Name: EEA1 Rabbit Polyclonal Antibody**  
**Catalog #: APRab10307**



---

1:20000

**Note**

For research use only.