

Product Name: EDG-3 Rabbit Polyclonal Antibody
Catalog #: APRab10299



Summary

Production Name	EDG-3 Rabbit Polyclonal Antibody
Description	Rabbit Polyclonal Antibody
Host	Rabbit
Application	WB,ELISA
Reactivity	Human,Mouse,Rat

Performance

Conjugation	Unconjugated
Modification	Unmodified
Isotype	IgG
Clonality	Polyclonal
Form	Liquid
Storage	Store at 4°C short term. Aliquot and store at -20°C long term. Avoid freeze/thaw cycles.
Buffer	Liquid in PBS containing 50% glycerol, 0.5% BSA and 0.02% New type preservative N.
Purification	Affinity purification

Immunogen

Gene Name	S1PR3
Alternative Names	S1PR3; EDG3; Sphingosine 1-phosphate receptor 3; S1P receptor 3; S1P3; Endothelial differentiation G-protein coupled receptor 3; Sphingosine 1-phosphate receptor Edg-3; S1P receptor Edg-3
Gene ID	1903.0
SwissProt ID	Q99500.The antiserum was produced against synthesized peptide derived from human EDG3. AA range:115-164

Application

Dilution Ratio	WB 1:500 - 1:2000. ELISA: 1:40000. Not yet tested in other applications.
Molecular Weight	42kD

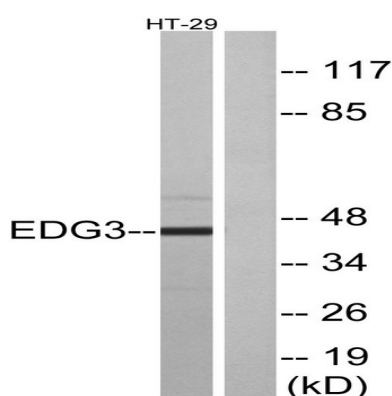
Background

This gene encodes a member of the EDG family of receptors, which are G protein-coupled receptors. This protein has been identified as a functional receptor for sphingosine 1-phosphate and likely contributes to the regulation of angiogenesis and vascular endothelial cell function. [provided by RefSeq, Jul 2008],function:Receptor for the lysosphingolipid sphingosine 1-phosphate (S1P). S1P is a bioactive lysophospholipid that elicits diverse physiological effect on most types of cells and tissues. When expressed in rat HTC4 hepatoma cells, is capable of mediating S1P-induced cell proliferation and suppression of apoptosis.,similarity:Belongs to the G-protein coupled receptor 1 family.,tissue specificity:Expressed in all tissues, but most abundantly in heart, placenta, kidney, and liver.,

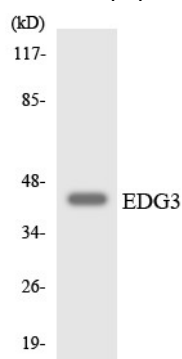
Research Area

Neuroactive ligand-receptor interaction;

Image Data

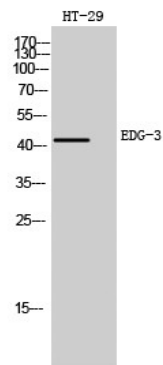


Western blot analysis of lysates from HT-29 cells, using EDG3 Antibody. The lane on the right is blocked with the synthesized peptide.



Western blot analysis of the lysates from HepG2 cells using EDG3 antibody.

Product Name: EDG-3 Rabbit Polyclonal Antibody
Catalog #: APRab10299



Western Blot analysis of HT-29 cells using EDG-3 Polyclonal Antibody

Note

For research use only.