

Summary

Production Name	EDEM3 Rabbit Polyclonal Antibody
Description	Rabbit Polyclonal Antibody
Host	Rabbit
Application	WB
Reactivity	Human,Mouse

Performance

Conjugation	Unconjugated
Modification	Unmodified
Isotype	IgG
Clonality	Polyclonal
Form	Liquid
Storage	Store at 4°C short term. Aliquot and store at -20°C long term. Avoid freeze/thaw cycles.
Buffer	Liquid in PBS containing 50% glycerol, and 0.02% New type preservative N.
Purification	Affinity purification

Immunogen

Gene Name	EDEM3 C1orf22
Alternative Names	
Gene ID	80267.0
SwissProt ID	Q9BZQ6.Synthesized peptide derived from part region of human protein

Application

Dilution Ratio	WB 1:500-2000 ELISA 1:5000-20000
Molecular Weight	102kD

Background

Quality control in the endoplasmic reticulum (ER) ensures that only properly folded proteins are retained in the cell through recognition and degradation of misfolded or unassembled proteins. EDEM3 belongs to a group of proteins that accelerate

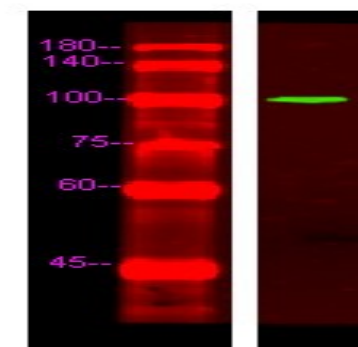
Product Name: EDEM3 Rabbit Polyclonal Antibody
Catalog #: APRab10293



degradation of misfolded glycoproteins in the ER (Hirao et al., 2006 [PubMed 16431915]).[supplied by OMIM, Mar 2008],domain:Contains a protease-associated domain (PA) of unknown function.,function:Involved in endoplasmic reticulum-associated degradation (ERAD). Accelerates the glycoprotein ERAD by proteasomes. This process depends on mannose-trimming from the N-glycans. Seems to have alpha 1,2-mannosidase activity.,PTM:N-glycosylated.,similarity:Belongs to the glycosyl hydrolase 47 family.,similarity:Contains 1 PA (protease associated) domain.,

Research Area

Image Data



Western Blot analysis of Hela lysis, using primary antibody at 1:1000 dilution. Secondary antibody was diluted at 1:10000

Note

For research use only.