

## Summary

|                        |                                 |
|------------------------|---------------------------------|
| <b>Production Name</b> | Ebi3 Rabbit Polyclonal Antibody |
| <b>Description</b>     | Rabbit Polyclonal Antibody      |
| <b>Host</b>            | Rabbit                          |
| <b>Application</b>     | WB                              |
| <b>Reactivity</b>      | Human,Mouse                     |

## Performance

|                     |  |
|---------------------|--|
| <b>Conjugation</b>  | Unconjugated   |
| <b>Modification</b> | Unmodified   |
| <b>Isotype</b>      | IgG  |
| <b>Clonality</b>    | Polyclonal   |
| <b>Form</b>         | Liquid   |
| <b>Storage</b>      | Store at 4°C short term. Aliquot and store at -20°C long term. Avoid freeze/thaw cycles. |
| <b>Buffer</b>       | Liquid in PBS containing 50% glycerol, 0.5% BSA and 0.02% New type preservative N.       |
| <b>Purification</b> | Affinity purification  |

## Immunogen

|                          |   |
|--------------------------|---|
| <b>Gene Name</b>         | EBI3  |
| <b>Alternative Names</b> | EBI3; IL27B; Interleukin-27 subunit beta; IL-27 subunit beta; IL-27B; Epstein-Barr virus-induced gene 3 protein; EBV-induced gene 3 protein |
| <b>Gene ID</b>           | 10148.0   |
| <b>SwissProt ID</b>      | Q14213.The antiserum was produced against synthesized peptide derived from the Internal region of human EBI3. AA range:101-150              |

## Application

|                         |                                  |
|-------------------------|----------------------------------|
| <b>Dilution Ratio</b>   | WB 1:500-1:2000. ELISA: 1:10000. |
| <b>Molecular Weight</b> | 25kD                             |

## Background

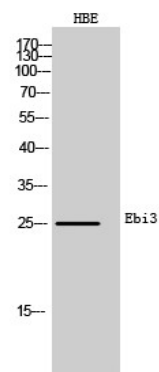
**Product Name: Ebi3 Rabbit Polyclonal Antibody**  
**Catalog #: APRab10273**



This gene was identified by its induced expression in B lymphocytes in response Epstein-Barr virus infection. It encodes a secreted glycoprotein belonging to the hematopoietin receptor family, and heterodimerizes with a 28 kDa protein to form interleukin 27 (IL-27). IL-27 regulates T cell and inflammatory responses, in part by activating the Jak/STAT pathway of CD4+ T cells. [provided by RefSeq, Sep 2008],function:Cytokine with pro- and anti-inflammatory properties, that can regulate T helper cell development, suppress T-cell proliferation, stimulate cytotoxic T cell activity, induce isotype switching in B-cells, and that has diverse effects on innate immune cells. Among its target cells are CD4 T helper cells which can differentiate in type 1 effector cells (TH1), type 2 effector cells (TH2) and IL17 producing helper T-cells (TH17). It drives rapid clonal expansion of naive but not memory CD4 T-cells. It also strongly synergizes with IL-12 to trigger interferon-gamma/IFN-gamma production of naive CD4 T-cells, binds to the cytokine receptor WSX-1/TCCR. Another important role of IL27 is its antitumor activity as well as its antiangiogenic activity with activation of production of antiangiogenic chemokines.,induction:By EBV.,online information:Interleukin-27 entry,similarity:Belongs to the type I cytokine receptor family. Type 3 subfamily.,similarity:Contains 2 fibronectin type-III domains.,subunit:Heterodimer with IL27. IL-27 is an heterodimer composed IL27 and EBI3. EBI3 is also a component of the IL-12 heterodimer. Interacts with SQSTM1.,

## Research Area

## Image Data



Western Blot analysis of HBE cells using Ebi3 Polyclonal Antibody.. Secondary antibody was diluted at 1:20000

## Note

For research use only.