

## Summary

<b>Production Name</b>	DZIP3 Rabbit Polyclonal Antibody
<b>Description</b>	Rabbit Polyclonal Antibody
<b>Host</b>	Rabbit
<b>Application</b>	WB
<b>Reactivity</b>	Human,Rat,Mouse

## Performance

<b>Conjugation</b>	Unconjugated
<b>Modification</b>	Unmodified
<b>Isotype</b>	IgG
<b>Clonality</b>	Polyclonal
<b>Form</b>	Liquid
<b>Storage</b>	Store at 4°C short term. Aliquot and store at -20°C long term. Avoid freeze/thaw cycles.
<b>Buffer</b>	Liquid in PBS containing 50% glycerol, 0.5% BSA and 0.02% New type preservative N.
<b>Purification</b>	Affinity purification

## Immunogen

<b>Gene Name</b>	DZIP3
<b>Alternative Names</b>	DZIP3; KIAA0675; E3 ubiquitin-protein ligase DZIP3; DAZ-interacting protein 3; RNA-binding ubiquitin ligase of 138 kDa; hRUL138
<b>Gene ID</b>	9666.0
<b>SwissProt ID</b>	Q86Y13.The antiserum was produced against synthesized peptide derived from human DZIP3. AA range:681-730

## Application

<b>Dilution Ratio</b>	WB 1:500-1:2000. ELISA: 1:40000.
<b>Molecular Weight</b>	140kD

## Background

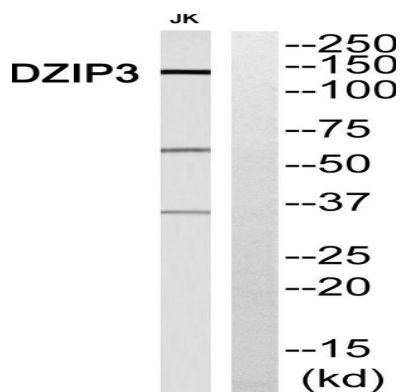
**Product Name: DZIP3 Rabbit Polyclonal Antibody**  
**Catalog #: APRab10248**



function:E3 Ubiquitin ligase proteins mediate ubiquitination and subsequent proteasomal degradation of target proteins. E3 ubiquitin ligases accept ubiquitin from an E2 ubiquitin-conjugating enzyme in the form of a thioester and then directly transfers the ubiquitin to targeted substrates. Able to specifically bind RNA.,pathway:Protein modification; protein ubiquitination.,sequence caution:Contaminating sequence. Potential poly-A sequence.,similarity:Contains 1 RING-type zinc finger.,subunit:Interacts with DAZ proteins.,tissue specificity:Widely expressed at low level. Highly expressed in skeletal muscle, kidney and heart. Expressed at low level in placenta, lung, brain, liver and pancreas.,function:E3 Ubiquitin ligase proteins mediate ubiquitination and subsequent proteasomal degradation of target proteins. E3 ubiquitin ligases accept ubiquitin from an E2 ubiquitin-conjugating enzyme in the form of a thioester and then directly transfers the ubiquitin to targeted substrates. Able to specifically bind RNA.,pathway:Protein modification; protein ubiquitination.,sequence caution:Contaminating sequence. Potential poly-A sequence.,similarity:Contains 1 RING-type zinc finger.,subunit:Interacts with DAZ proteins.,tissue specificity:Widely expressed at low level. Highly expressed in skeletal muscle, kidney and heart. Expressed at low level in placenta, lung, brain, liver and pancreas.,

## Research Area

## Image Data



Western blot analysis of DZIP3 Antibody. The lane on the right is blocked with the DZIP3 peptide.

## Note

For research use only.