

Summary

Production Name	Dynein LC 2B Rabbit Polyclonal Antibody
Description	Rabbit Polyclonal Antibody
Host	Rabbit
Application	IHC,ELISA
Reactivity	Human,Mouse

Performance

Conjugation	Unconjugated
Modification	Unmodified
Isotype	IgG
Clonality	Polyclonal
Form	Liquid
Storage	Store at 4°C short term. Aliquot and store at -20°C long term. Avoid freeze/thaw cycles.
Buffer	Liquid in PBS containing 50% glycerol, 0.5% BSA and 0.02% New type preservative N.
Purification	Affinity purification

Immunogen

Gene Name	DYNLRB2
Alternative Names	DYNLRB2; DNCL2B; DNLC2B; ROBLD2; Dynein light chain roadblock-type 2; Dynein light chain 2B; cytoplasmic; Roadblock domain-containing protein 2
Gene ID	83657.0
SwissProt ID	Q8TF09.The antiserum was produced against synthesized peptide derived from human DYNLRB2. AA range:21-70

Application

Dilution Ratio	IHC 1:100-1:300 ELISA: 1:10000
Molecular Weight	

Background

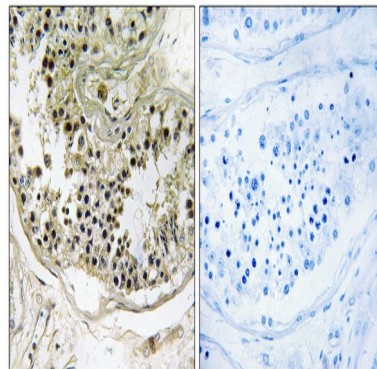
Product Name: Dynein LC 2B Rabbit Polyclonal Antibody
Catalog #: APRab10231



function:May be involved in assembly and motor function of dynein, which plays a central role in cell division and intracellular transport.,miscellaneous:Expression is significantly down-regulated in hepatocellular carcinoma (HCC) patients.,similarity:Belongs to the GAMAD family.,tissue specificity:High expression in heart, brain, placenta, skeletal muscle, prostate and small intestine; moderate in kidney, pancreas, spleen, testis, ovary and colon; low in lung, liver, thymus and leukocyte.,function:May be involved in assembly and motor function of dynein, which plays a central role in cell division and intracellular transport.,miscellaneous:Expression is significantly down-regulated in hepatocellular carcinoma (HCC) patients.,similarity:Belongs to the GAMAD family.,tissue specificity:High expression in heart, brain, placenta, skeletal muscle, prostate and small intestine; moderate in kidney, pancreas, spleen, testis, ovary and colon; low in lung, liver, thymus and leukocyte.,

Research Area

Image Data



Immunohistochemistry analysis of paraffin-embedded human testis tissue, using DYNLRB2 Antibody. The picture on the right is blocked with the synthesized peptide.

Note

For research use only.