

## Summary

<b>Production Name</b>	Dvl-3 Rabbit Polyclonal Antibody
<b>Description</b>	Rabbit Polyclonal Antibody
<b>Host</b>	Rabbit
<b>Application</b>	WB,IHC,ELISA
<b>Reactivity</b>	Human,Mouse

## Performance

<b>Conjugation</b>	Unconjugated
<b>Modification</b>	Unmodified
<b>Isotype</b>	IgG
<b>Clonality</b>	Polyclonal
<b>Form</b>	Liquid
<b>Storage</b>	Store at 4°C short term. Aliquot and store at -20°C long term. Avoid freeze/thaw cycles.
<b>Buffer</b>	Liquid in PBS containing 50% glycerol, 0.5% BSA and 0.02% New type preservative N.
<b>Purification</b>	Affinity purification

## Immunogen

<b>Gene Name</b>	DVL3
<b>Alternative Names</b>	DVL3; KIAA0208; Segment polarity protein dishevelled homolog DVL-3; Dishevelled-3; DSH homolog 3
<b>Gene ID</b>	1857.0
<b>SwissProt ID</b>	Q92997.The antiserum was produced against synthesized peptide derived from human DVL3. AA range:326-375

## Application

<b>Dilution Ratio</b>	WB 1:500 - 1:2000. IHC 1:100 - 1:300. ELISA: 1:20000..
<b>Molecular Weight</b>	

**Product Name: Dvl-3 Rabbit Polyclonal Antibody**  
**Catalog #: APRab10211**



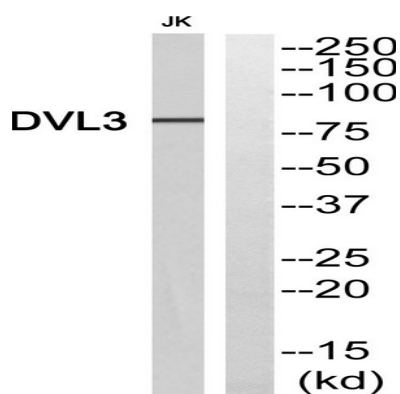
## Background

This gene is a member of a multi-gene family which shares strong similarity with the Drosophila dishevelled gene, dsh. The Drosophila dishevelled gene encodes a cytoplasmic phosphoprotein that regulates cell proliferation. [provided by RefSeq, Jul 2008],function:May play a role in the signal transduction pathway mediated by multiple Wnt genes.,similarity:Belongs to the DSH family.,similarity:Contains 1 DEP domain.,similarity:Contains 1 DIX domain.,similarity:Contains 1 PDZ (DHR) domain.,subunit:Interacts (via the PDZ domain) with the C-terminal regions of VANGL1 and VANGL2 (By similarity). Interacts (via the region containing both the PDZ and DEP domains) with LRRFIP2; the DIX domain may inhibit this interaction.,

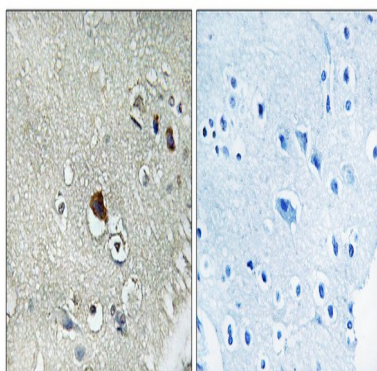
## Research Area

WNT;WNT-T CELLNotch;Melanogenesis;Pathways in cancer;Colorectal cancer;Basal cell carcinoma;

## Image Data

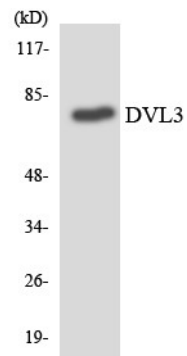


Western blot analysis of DVL3 Antibody. The lane on the right is blocked with the DVL3 peptide.



Immunohistochemistry analysis of paraffin-embedded human brain tissue, using DVL3 Antibody. The picture on the right is blocked with the synthesized peptide.

**Product Name: Dvl-3 Rabbit Polyclonal Antibody**  
**Catalog #: APRab10211**



Western blot analysis of the lysates from Jurkat cells using DVL3 antibody.

**Note**

For research use only.