

**Product Name: DSCR 1 Rabbit Polyclonal Antibody**  
**Catalog #: APRab10173**



## Summary

<b>Production Name</b>	DSCR 1 Rabbit Polyclonal Antibody
<b>Description</b>	Rabbit Polyclonal Antibody
<b>Host</b>	Rabbit
<b>Application</b>	WB,
<b>Reactivity</b>	Human,Mouse,Rat

## Performance

<b>Conjugation</b>	Unconjugated
<b>Modification</b>	Unmodified
<b>Isotype</b>	IgG
<b>Clonality</b>	Polyclonal
<b>Form</b>	Liquid
<b>Storage</b>	Store at 4°C short term. Aliquot and store at -20°C long term. Avoid freeze/thaw cycles.
<b>Buffer</b>	Liquid in PBS containing 50% glycerol, 0.5% BSA and 0.02% New type preservative N.
<b>Purification</b>	Affinity purification

## Immunogen

<b>Gene Name</b>	RCAN1
<b>Alternative Names</b>	RCAN1; ADAPT78; CSP1; DSC1; DSCR1; Calcipressin-1; Adapt78; Down syndrome critical region protein 1; Myocyte-enriched calcineurin-interacting protein 1; MCIP1; Regulator of calcineurin 1
<b>Gene ID</b>	1827.0
<b>SwissProt ID</b>	P53805.The antiserum was produced against synthesized peptide derived from human RCAN1. AA range:201-250

## Application

<b>Dilution Ratio</b>	WB 1:500 - 1:2000. ELISA: 1:10000. Not yet tested in other applications.
<b>Molecular Weight</b>	22kD

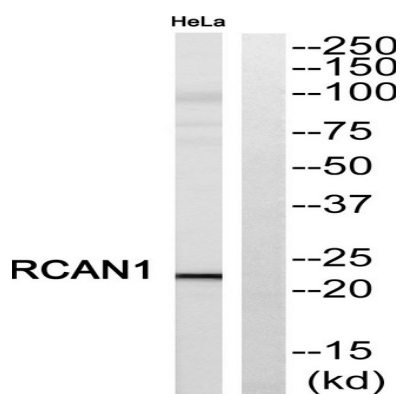
## Background

The protein encoded by this gene interacts with calcineurin A and inhibits calcineurin-dependent signaling pathways, possibly affecting central nervous system development. This gene is located in the minimal candidate region for the Down syndrome phenotype, and is overexpressed in the brain of Down syndrome fetuses. Chronic overexpression of this gene may lead to neurofibrillary tangles such as those associated with Alzheimer disease. Alternative splicing results in multiple transcript variants. [provided by RefSeq, Nov 2013],function:Inhibits calcineurin-dependent transcriptional responses by binding to the catalytic domain of calcineurin A. Could play a role during central nervous system development.,induction:By calcium.,similarity:Belongs to the RCAN family.,tissue specificity:Highly expressed heart, brain and skeletal muscle. Also expressed in all other tissues.,

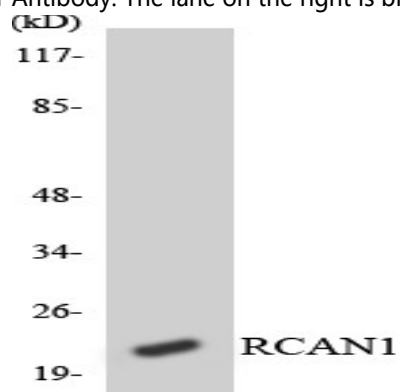
## Research Area

B\_Cell\_Antigen

## Image Data

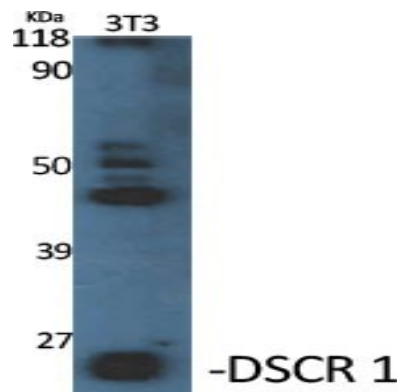


Western blot analysis of RCAN1 Antibody. The lane on the right is blocked with the RCAN1 peptide.



Western blot analysis of the lysates from HT-29 cells using RCAN1 antibody.

**Product Name: DSCR 1 Rabbit Polyclonal Antibody**  
**Catalog #: APRab10173**



Western Blot analysis of various cells using DSCR 1 Polyclonal Antibody diluted at 1: 1000



Western Blot analysis of HeLa cells using DSCR 1 Polyclonal Antibody diluted at 1: 1000

### **Note**

For research use only.