

Product Name: DRA Rabbit Polyclonal Antibody
Catalog #: APRab10153



Summary

Production Name	DRA Rabbit Polyclonal Antibody
Description	Rabbit Polyclonal Antibody
Host	Rabbit
Application	WB
Reactivity	Human,Mouse,Rat

Performance

Conjugation	Unconjugated
Modification	Unmodified
Isotype	IgG
Clonality	Polyclonal
Form	Liquid
Storage	Store at 4°C short term. Aliquot and store at -20°C long term. Avoid freeze/thaw cycles.
Buffer	Liquid in PBS containing 50% glycerol, 0.5% BSA and 0.02% New type preservative N.
Purification	Affinity purification

Immunogen

Gene Name	SLC26A3
Alternative Names	SLC26A3; DRA; Chloride anion exchanger; Down-regulated in adenoma; Protein DRA; Solute carrier family 26 member 3
Gene ID	1811.0
SwissProt ID	P40879.Synthesized peptide derived from the C-terminal region of human DRA.

Application

Dilution Ratio	WB 1:500-1:2000. ELISA: 1:20000.
Molecular Weight	84kD

Background

The protein encoded by this gene is a transmembrane glycoprotein that transports chloride ions across the cell membrane

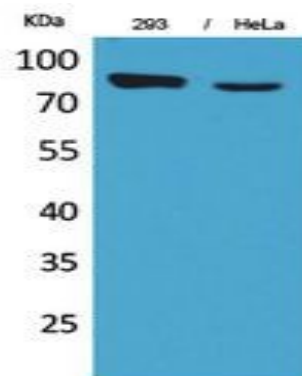
Product Name: DRA Rabbit Polyclonal Antibody
Catalog #: APRab10153



in exchange for bicarbonate ions. It is localized to the mucosa of the lower intestinal tract, particularly to the apical membrane of columnar epithelium and some goblet cells. The protein is essential for intestinal chloride absorption, and mutations in this gene have been associated with congenital chloride diarrhea. [provided by RefSeq, Oct 2008],developmental stage:Expression is significantly decreased in adenomas (polyps) and adenocarcinomas of the colon.,disease:Defects in SLC26A3 are the cause of congenital chloride diarrhea (CLD) [MIM:214700]. CLD is a disease characterized by voluminous watery stools containing an excess of chloride. The children with this disease are often premature.,function:Chloride/bicarbonate exchanger. Involved in absorbtion of in the colon. Helps mediate electrolyte and fluid absorbtion.,PTM:Phosphorylated upon DNA damage, probably by ATM or ATR.,similarity:Belongs to the SLC26A/SuLP transporter (TC 2.A.53) family.,similarity:Contains 1 STAS domain.,subunit:Interacts with PDZK1.,

Research Area

Image Data



Western Blot analysis of 293, HeLa cells using DRA Polyclonal Antibody.. Secondary antibody was diluted at 1:20000

Note

For research use only.