
Summary

Production Name	Dok-6 Rabbit Polyclonal Antibody
Description	Rabbit Polyclonal Antibody
Host	Rabbit
Application	IF, WB, ELISA
Reactivity	Human, Mouse

Performance

Conjugation	Unconjugated
Modification	Unmodified
Isotype	IgG
Clonality	Polyclonal
Form	Liquid
Storage	Store at 4°C short term. Aliquot and store at -20°C long term. Avoid freeze/thaw cycles.
Buffer	Liquid in PBS containing 50% glycerol, 0.5% BSA and 0.02% New type preservative N.
Purification	Affinity purification

Immunogen

Gene Name	DOK6
Alternative Names	DOK6; DOK5L; Docking protein 6; Downstream of tyrosine kinase 6
Gene ID	220164.0
SwissProt ID	Q6PKX4. The antiserum was produced against synthesized peptide derived from human DOK6. AA range: 111-160

Application

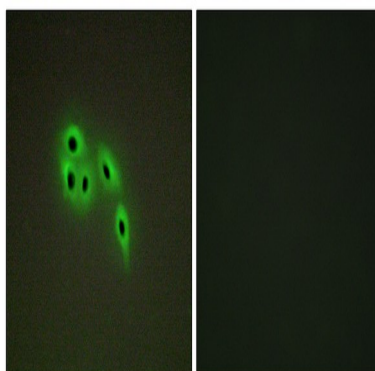
Dilution Ratio	WB 1:500 - 1:2000. IF 1:200 - 1:1000. ELISA: 1:10000. Not yet tested in other applications.
Molecular Weight	43kD

Background

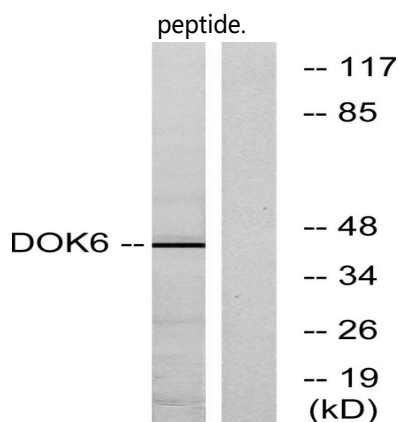
docking protein 6(DOK6) Homo sapiens DOK6 is a member of the DOK (see DOK1; MIM 602919) family of intracellular adaptors that play a role in the RET (MIM 164761) signaling cascade (Crowder et al., 2004 [PubMed 15286081]).[supplied by OMIM, Mar 2008],domain:PTB domain mediates receptor interaction.,function:DOK proteins are enzymatically inert adaptor or scaffolding proteins. They provide a docking platform for the assembly of multimolecular signaling complexes. DOK6 promotes Ret-mediated neurite growth. May have a role in brain development and/or maintenance.,PTM:On Ret activation, phosphorylated on one or more C-terminal tyrosine residues by an Src family kinase.,similarity:Belongs to the DOK family. Type B subfamily.,similarity:Contains 1 IRS-type PTB domain.,similarity:Contains 1 PH domain.,subunit:Interacts via its PTB domain with phosphorylated RET.,tissue specificity:Highly expressed in fetal and adult brain. Highly expressed in the cerebellum. Weak expression in kidney, spinal cord and testis.,

Research Area

Image Data



Immunofluorescence analysis of A549 cells, using DOK6 Antibody. The picture on the right is blocked with the synthesized peptide.



Western blot analysis of lysates from COLO cells, using DOK6 Antibody. The lane on the right is blocked with the synthesized peptide.

Product Name: Dok-6 Rabbit Polyclonal Antibody
Catalog #: APRab10110



Western Blot analysis of various cells using Dok-6 Polyclonal Antibody

Note

For research use only.