

Product Name: Dok-5 Rabbit Polyclonal Antibody
Catalog #: APRab10109



Summary

Production Name	Dok-5 Rabbit Polyclonal Antibody
Description	Rabbit Polyclonal Antibody
Host	Rabbit
Application	WB,ELISA
Reactivity	Human,Mouse

Performance

Conjugation	Unconjugated
Modification	Unmodified
Isotype	IgG
Clonality	Polyclonal
Form	Liquid
Storage	Store at 4°C short term. Aliquot and store at -20°C long term. Avoid freeze/thaw cycles.
Buffer	Liquid in PBS containing 50% glycerol, 0.5% BSA and 0.02% New type preservative N.
Purification	Affinity purification

Immunogen

Gene Name	DOK5
Alternative Names	DOK5; C20orf180; Docking protein 5; Downstream of tyrosine kinase 5; Insulin receptor substrate 6; IRS-6; IRS6
Gene ID	55816.0
SwissProt ID	Q9P104.The antiserum was produced against synthesized peptide derived from human DOK5. AA range:101-150

Application

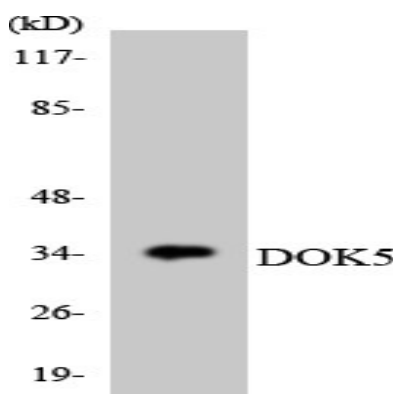
Dilution Ratio	WB 1:500 - 1:2000. ELISA: 1:20000
Molecular Weight	36kD

Background

docking protein 5(DOK5) Homo sapiens The protein encoded by this gene is a member of the DOK family of membrane proteins, which are adapter proteins involved in signal transduction. The encoded protein interacts with phosphorylated receptor tyrosine kinases to mediate neurite outgrowth and activation of the MAP kinase pathway. Unlike other DOK family proteins, this protein does not interact with RASGAP. This protein is up-regulated in patients with systemic sclerosis and is associated with fibrosis induced by insulin-like growth factor binding protein 5. Alternative splicing of this gene results in multiple transcript variants. [provided by RefSeq, Jun 2014],domain:PTB domain mediates receptor interaction.,function:DOK proteins are enzymatically inert adaptor or scaffolding proteins. They provide a docking platform for the assembly of multimolecular signaling complexes. DOK5 functions in RET-mediated neurite outgrowth and plays a positive role in activation of the MAP kinase pathway. Putative link with downstream effectors of RET in neuronal differentiation.,PTM:Phosphorylated on tyrosine residues in response to insulin, IGF1 and GDNF.,similarity:Belongs to the DOK family. Type B subfamily.,similarity:Contains 1 IRS-type PTB domain.,similarity:Contains 1 PH domain.,subunit:Interacts with phosphorylated RET. In contrast to other DOK proteins, it does not interact with RASGAP.,tissue specificity:Highest expression in skeletal muscle, lower in brain, heart and kidney. Also detected in activated peripheral blood T-lymphocytes.,

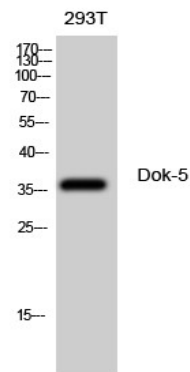
Research Area

Image Data



Western blot analysis of the lysates from HT-29 cells using DOK5 antibody.

Product Name: Dok-5 Rabbit Polyclonal Antibody
Catalog #: APRab10109



Western Blot analysis of 293T cells using Dok-5 Polyclonal Antibody diluted at 1: 500

Note

For research use only.