

Product Name: DOCK 2 Rabbit Polyclonal Antibody
Catalog #: APRab10101



Summary

Production Name	DOCK 2 Rabbit Polyclonal Antibody
Description	Rabbit Polyclonal Antibody
Host	Rabbit
Application	IHC,ELISA
Reactivity	Human,Mouse,Rat

Performance

Conjugation	Unconjugated
Modification	Unmodified
Isotype	IgG
Clonality	Polyclonal
Form	Liquid
Storage	Store at 4°C short term. Aliquot and store at -20°C long term. Avoid freeze/thaw cycles.
Buffer	Liquid in PBS containing 50% glycerol, 0.5% BSA and 0.02% New type preservative N.
Purification	Affinity purification

Immunogen

Gene Name	DOCK2
Alternative Names	DOCK2; KIAA0209; Deducator of cytokinesis protein 2
Gene ID	1794.0
SwissProt ID	Q92608.Synthesized peptide derived from the Internal region of human DOCK 2.

Application

Dilution Ratio IHC 1:100-1:300 ELISA: 1:40000

Molecular Weight

Background

The protein encoded by this gene belongs to the CDM protein family. It is specifically expressed in hematopoietic cells and is predominantly expressed in peripheral blood leukocytes. The protein is involved in remodeling of the actin cytoskeleton

Product Name: DOCK 2 Rabbit Polyclonal Antibody
Catalog #: APRab10101

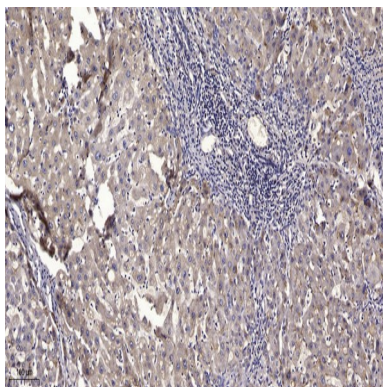


required for lymphocyte migration in response to chemokine signaling. It activates members of the Rho family of GTPases, for example RAC1 and RAC2, by acting as a guanine nucleotide exchange factor (GEF) to exchange bound GDP for free GTP. [provided by RefSeq, Oct 2016],domain:The DHR-2 domain may mediate the GEF activity.,function:Involved in cytoskeletal rearrangements required for lymphocyte migration in response of chemokines. Activates RAC1 and RAC2 small GTPases, probably by functioning as a guanine nucleotide exchange factor (GEF), which exchanges bound GDP for free GTP. May also participate in IL2 transcriptional activation via the activation of RAC2.,similarity:Belongs to the DOCK family.,similarity:Contains 1 DHR-1 (CZH-1) domain.,similarity:Contains 1 DHR-2 (CZH-2) domain.,similarity:Contains 1 SH3 domain.,subcellular location:Colocalizes with F-actin.,subunit:Interacts with RAC1 and RAC2. Interacts with CRKL and VAV. Interacts with CD3Z.,tissue specificity:Specifically expressed in hematopoietic cells. Highly expressed in peripheral blood leukocytes, and expressed at intermediate level in thymus and spleen. Expressed at very low level in the small intestine and colon.,

Research Area

Chemokine;Fc gamma R-mediated phagocytosis;

Image Data



Immunohistochemical analysis of paraffin-embedded human liver cancer. 1, Antibody was diluted at 1:200 (4° overnight) .
2, Tris-EDTA,pH9.0 was used for antigen retrieval. 3,Secondary antibody was diluted at 1:200 (room temperature, 45min) .

Note

For research use only.