

## Summary

<b>Production Name</b>	DOC-1R Rabbit Polyclonal Antibody
<b>Description</b>	Rabbit Polyclonal Antibody
<b>Host</b>	Rabbit
<b>Application</b>	IHC,ELISA
<b>Reactivity</b>	Human,Mouse

## Performance

<b>Conjugation</b>	Unconjugated
<b>Modification</b>	Unmodified
<b>Isotype</b>	IgG
<b>Clonality</b>	Polyclonal
<b>Form</b>	Liquid
<b>Storage</b>	Store at 4°C short term. Aliquot and store at -20°C long term. Avoid freeze/thaw cycles.
<b>Buffer</b>	Liquid in PBS containing 50% glycerol, 0.5% BSA and 0.02% New type preservative N.
<b>Purification</b>	Affinity purification

## Immunogen

<b>Gene Name</b>	CDK2AP2
<b>Alternative Names</b>	CDK2AP2; DOC1R; Cyclin-dependent kinase 2-associated protein 2; CDK2-associated protein 2; DOC-1-related protein; DOC-1R
<b>Gene ID</b>	10263.0
<b>SwissProt ID</b>	O75956.The antiserum was produced against synthesized peptide derived from human CDKA2. AA range:51-100

## Application

<b>Dilution Ratio</b>	IHC 1:100-1:300 ELISA: 1:5000
<b>Molecular Weight</b>	

## Background

**Product Name: DOC-1R Rabbit Polyclonal Antibody**  
**Catalog #: APRab10097**

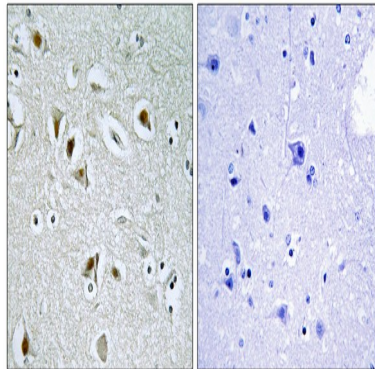


---

cyclin dependent kinase 2 associated protein 2(CDK2AP2) Homo sapiens This gene encodes a protein that interacts with cyclin-dependent kinase 2 associated protein 1. Pseudogenes associated with this gene are located on chromosomes 7 and 9. Alternatively spliced transcript variants have been observed for this gene. [provided by RefSeq, Dec 2012],similarity:Belongs to the CDK2AP family.,tissue specificity:Ubiquitous.,

## Research Area

## Image Data



Immunohistochemistry analysis of paraffin-embedded human brain tissue, using CDKA2 Antibody. The picture on the right is blocked with the synthesized peptide.

## Note

For research use only.