

## Summary

<b>Production Name</b>	DNAM-1 Rabbit Polyclonal Antibody
<b>Description</b>	Rabbit Polyclonal Antibody
<b>Host</b>	Rabbit
<b>Application</b>	WB,IHC,IF,ELISA
<b>Reactivity</b>	Human,Mouse,Monkey

## Performance

<b>Conjugation</b>	Unconjugated
<b>Modification</b>	Unmodified
<b>Isotype</b>	IgG
<b>Clonality</b>	Polyclonal
<b>Form</b>	Liquid
<b>Storage</b>	Store at 4°C short term. Aliquot and store at -20°C long term. Avoid freeze/thaw cycles.
<b>Buffer</b>	Liquid in PBS containing 50% glycerol, 0.5% BSA and 0.02% New type preservative N.
<b>Purification</b>	Affinity purification

## Immunogen

<b>Gene Name</b>	CD226
<b>Alternative Names</b>	CD226; DNAM1; CD226 antigen; DNAX accessory molecule 1; DNAM-1; CD antigen CD226
<b>Gene ID</b>	10666.0
<b>SwissProt ID</b>	Q15762.The antiserum was produced against synthesized peptide derived from human CD226/DNAM-1. AA range:287-336

## Application

<b>Dilution Ratio</b>	WB 1:500 - 1:2000. IHC 1:100 - 1:300. IF 1:200 - 1:1000. ELISA: 1:20000. Not yet tested in other applications.
<b>Molecular Weight</b>	38kD

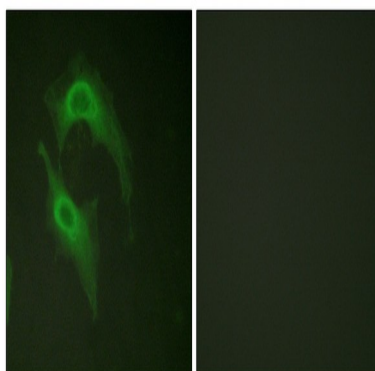
## Background

This gene encodes a glycoprotein expressed on the surface of NK cells, platelets, monocytes and a subset of T cells. It is a member of the Ig-superfamily containing 2 Ig-like domains of the V-set. The protein mediates cellular adhesion of platelets and megakaryocytic cells to vascular endothelial cells. The protein also plays a role in megakaryocytic cell maturation. Alternative splicing results in multiple transcript variants. [provided by RefSeq, Jan 2015],function:Receptor involved in intercellular adhesion, lymphocyte signaling, cytotoxicity and lymphokine secretion mediated by cytotoxic T-lymphocyte (CTL) and NK cell.,PTM:Phosphorylated.,similarity:Contains 2 Ig-like C2-type (immunoglobulin-like) domains.,subunit:Interacts with PVR and PVRL2.,tissue specificity:Expressed by peripheral blood T-lymphocytes.,

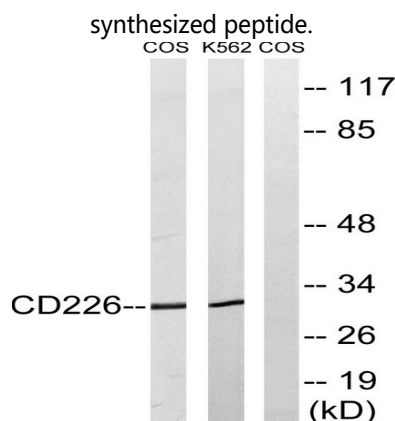
## Research Area

Cell adhesion molecules (CAMs);

## Image Data

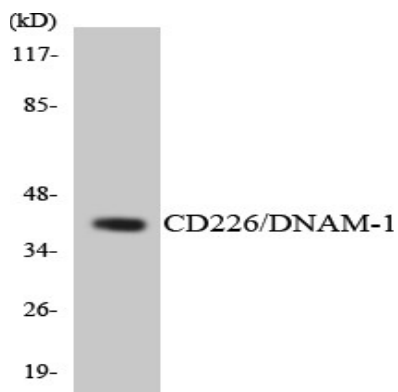


Immunofluorescence analysis of HeLa cells, using CD226/DNAM-1 Antibody. The picture on the right is blocked with the

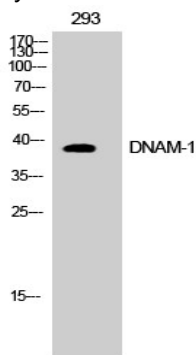


Western blot analysis of lysates from COS7 and K562 cells, treated with PMA 125ng/ml 30', using CD226/DNAM-1 Antibody. The lane on the right is blocked with the synthesized peptide.

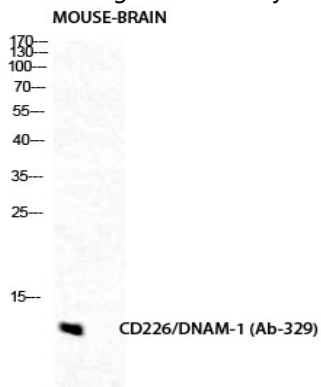
**Product Name: DNAM-1 Rabbit Polyclonal Antibody**  
**Catalog #: APRab10072**



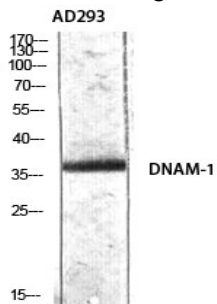
Western blot analysis of the lysates from HUVEC cells using CD226/DNAM-1 antibody.



Western Blot analysis of COS7 cells using DNAM-1 Polyclonal Antibody diluted at 1 : 500



Western Blot analysis of mouse-brain cells using DNAM-1 Polyclonal Antibody diluted at 1 : 500



**Product Name: DNAM-1 Rabbit Polyclonal Antibody**  
**Catalog #: APRab10072**



---

Western Blot analysis of AD293 using DNAM-1 Polyclonal Antibody diluted at 1: 500

**Note**

For research use only.