

## Summary

<b>Production Name</b>	DNA pol $\lambda$ Rabbit Polyclonal Antibody
<b>Description</b>	Rabbit Polyclonal Antibody
<b>Host</b>	Rabbit
<b>Application</b>	WB,IHC,ELISA
<b>Reactivity</b>	Human,Mouse,Rat

## Performance

<b>Conjugation</b>	Unconjugated
<b>Modification</b>	Unmodified
<b>Isotype</b>	IgG
<b>Clonality</b>	Polyclonal
<b>Form</b>	Liquid
<b>Storage</b>	Store at 4°C short term. Aliquot and store at -20°C long term. Avoid freeze/thaw cycles.
<b>Buffer</b>	Liquid in PBS containing 50% glycerol, 0.5% BSA and 0.02% New type preservative N.
<b>Purification</b>	Affinity purification

## Immunogen

<b>Gene Name</b>	POLL
<b>Alternative Names</b>	POLL; DNA polymerase lambda; Pol Lambda; DNA polymerase beta-2; Pol beta2; DNA polymerase kappa
<b>Gene ID</b>	27343.0
<b>SwissProt ID</b>	Q9UGP5.The antiserum was produced against synthesized peptide derived from human DNA Polymerase lambda. AA range:451-500

## Application

<b>Dilution Ratio</b>	WB 1:500 - 1:2000. IHC 1:100 - 1:300. ELISA: 1:10000..
<b>Molecular Weight</b>	63kD

## Background

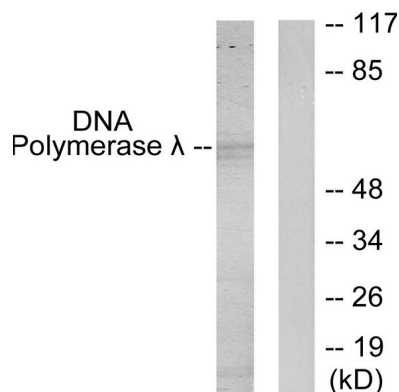
This gene encodes a DNA polymerase. DNA polymerases catalyze DNA-template-directed extension of the 3'-end of a DNA strand. This particular polymerase, which is a member of the X family of DNA polymerases, likely plays a role in non-homologous end joining and other DNA repair processes. Alternatively spliced transcript variants have been described.

[provided by RefSeq, Mar 2010],catalytic activity:Deoxynucleoside triphosphate + DNA(n) = diphosphate + DNA(n+1),cofactor:Manganese.,function:Repair polymerase. Involved in base excision repair (BER) responsible for repair of lesions that give rise to abasic (AP) sites in DNA. Has both DNA polymerase and terminal transferase activities. Has a 5'-deoxyribose-5-phosphate lyase (dRP lyase) activity.,PTM:Phosphorylated upon DNA damage, probably by ATM or ATR.,similarity:Belongs to the DNA polymerase type-X family.,similarity:Contains 1 BRCT domain.,subunit:Binds PCNA.,tissue specificity:Expressed in a number of tissues. Abundant in testis.,

## Research Area

Base excision repair;Non-homologous end-joining;

## Image Data

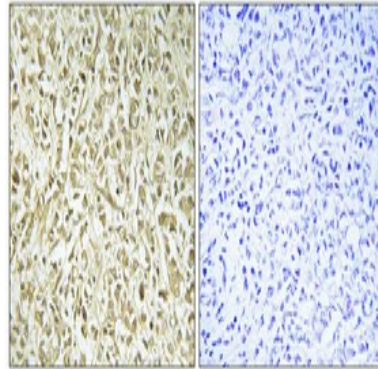


Western blot analysis of lysates from 293 cells, using DNA Polymerase lambda Antibody. The lane on the right is blocked with the synthesized peptide.



Western Blot analysis of various cells using DNA pol  $\lambda$  Polyclonal Antibody cells nucleus extracted by Minute TM Cytoplasmic and Nuclear Fractionation kit (SC-003, Inventbiotech, MN, USA) .

**Product Name: DNA pol  $\lambda$  Rabbit Polyclonal Antibody**  
**Catalog #: APRab10064**



Immunohistochemical analysis of paraffin-embedded Human breast cancer. Antibody was diluted at 1:100 (4<sup>o</sup>,overnight) . High-pressure and temperature Tris-EDTA,pH8.0 was used for antigen retrieval. Negative contrl (right) obtaned from antibody was pre-absorbed by immunogen peptide.

### **Note**

For research use only.