

Product Name: DNA pol ε B Rabbit Polyclonal Antibody
Catalog #: APRab10060



Summary

Production Name	DNA pol ε B Rabbit Polyclonal Antibody
Description	Rabbit Polyclonal Antibody
Host	Rabbit
Application	WB
Reactivity	Human,Rat,Mouse

Performance

Conjugation	Unconjugated
Modification	Unmodified
Isotype	IgG
Clonality	Polyclonal
Form	Liquid
Storage	Store at 4°C short term. Aliquot and store at -20°C long term. Avoid freeze/thaw cycles.
Buffer	Liquid in PBS containing 50% glycerol, 0.5% BSA and 0.02% New type preservative N.
Purification	Affinity purification

Immunogen

Gene Name	POLE2
Alternative Names	POLE2; DPE2; DNA polymerase epsilon subunit 2; DNA polymerase II subunit 2; DNA polymerase epsilon subunit B
Gene ID	5427.0
SwissProt ID	P56282.Synthesized peptide derived from the Internal region of human DNA pol ε B.

Application

Dilution Ratio	WB 1:500-1:2000. ELISA: 1:40000.
Molecular Weight	59kD

Background

catalytic activity:Deoxynucleoside triphosphate + DNA(n) = diphosphate + DNA(n+1).,function:Participates in DNA repair

Product Name: DNA pol ϵ B Rabbit Polyclonal Antibody
Catalog #: APRab10060

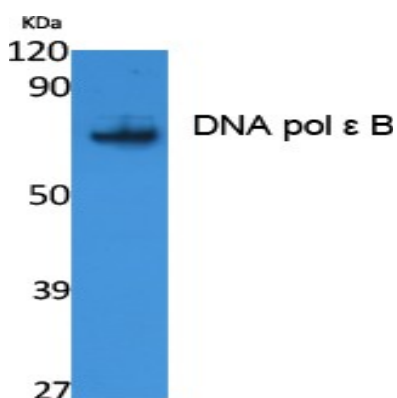


and in chromosomal DNA replication.,miscellaneous:In eukaryotes there are five DNA polymerases: alpha, beta, gamma, delta, and epsilon which are responsible for different reactions of DNA synthesis.,similarity:Belongs to the DNA polymerase epsilon subunit B family.,subunit:Consists of four subunits: POLE, POLE2, POLE3 and POLE4.,catalytic activity:Deoxynucleoside triphosphate + DNA(n) = diphosphate + DNA(n+1),.function:Participates in DNA repair and in chromosomal DNA replication.,miscellaneous:In eukaryotes there are five DNA polymerases: alpha, beta, gamma, delta, and epsilon which are responsible for different reactions of DNA synthesis.,similarity:Belongs to the DNA polymerase epsilon subunit B family.,subunit:Consists of four subunits: POLE, POLE2, POLE3 and POLE4.,

Research Area

Purine metabolism;Pyrimidine metabolism;DNA replication;Base excision repair;Nucleotide excision repair;

Image Data



Western Blot analysis of extracts from Jurkat cells, using DNA pol ϵ B Polyclonal Antibody.. Secondary antibody was diluted at 1:20000 cells nucleus extracted by Minute TM Cytoplasmic and Nuclear Fractionation kit (SC-003, Invent biotech, MN, USA) .

Note

For research use only.