

**Product Name: DNA pol  $\delta$ 3 Rabbit Polyclonal Antibody**  
**Catalog #: APRab10057**



---

## Summary

<b>Production Name</b>	DNA pol $\delta$ 3 Rabbit Polyclonal Antibody
<b>Description</b>	Rabbit Polyclonal Antibody
<b>Host</b>	Rabbit
<b>Application</b>	WB,ELISA
<b>Reactivity</b>	Human,Mouse,Rat

## Performance

<b>Conjugation</b>	Unconjugated
<b>Modification</b>	Unmodified
<b>Isotype</b>	IgG
<b>Clonality</b>	Polyclonal
<b>Form</b>	Liquid
<b>Storage</b>	Store at 4°C short term. Aliquot and store at -20°C long term. Avoid freeze/thaw cycles.
<b>Buffer</b>	Liquid in PBS containing 50% glycerol, 0.5% BSA and 0.02% New type preservative N.
<b>Purification</b>	Affinity purification

## Immunogen

<b>Gene Name</b>	POLD3
<b>Alternative Names</b>	POLD3; KIAA0039; DNA polymerase delta subunit 3; DNA polymerase delta subunit p66
<b>Gene ID</b>	10714.0
<b>SwissProt ID</b>	Q15054.The antiserum was produced against synthesized peptide derived from human POLD3. AA range:411-460

## Application

<b>Dilution Ratio</b>	WB 1:500 - 1:2000. ELISA: 1:20000
<b>Molecular Weight</b>	51kD

## Background

---

**Product Name: DNA pol  $\delta$ 3 Rabbit Polyclonal Antibody**  
**Catalog #: APRab10057**

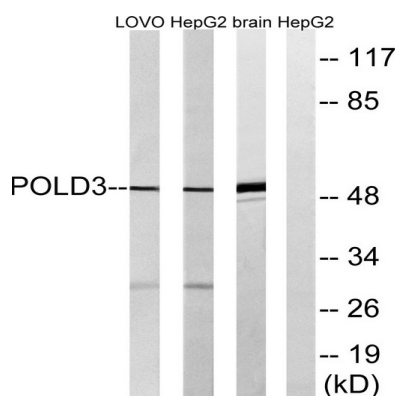


This gene encodes the 66-kDa subunit of DNA polymerase delta. DNA polymerase delta possesses both polymerase and 3' to 5' exonuclease activity and plays a critical role in DNA replication and repair. The encoded protein plays a role in regulating the activity of DNA polymerase delta through interactions with other subunits and the processivity cofactor proliferating cell nuclear antigen (PCNA). Alternatively spliced transcript variants have been observed for this gene. [provided by RefSeq, Mar 2012],function:Required for optimal DNA polymerase delta activity.,subunit:Heterotetramer composed of subunits of 125 kDa, 50 kDa, 66 kDa and 12 kDa. Interacts with POLD2. Interacts with PCNA.,

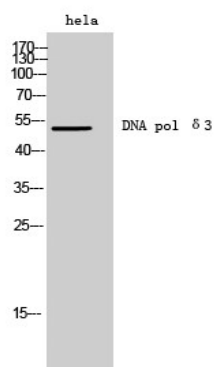
## Research Area

Purine metabolism;Pyrimidine metabolism;DNA replication;Base excision repair;Nucleotide excision repair;Mismatch repair;Homologous recombination;

## Image Data



Western blot analysis of lysates from LOVO, HepG2, and mouse brain cells, using POLD3 Antibody. The lane on the right is blocked with the synthesized peptide.



Western Blot analysis of hela cells using DNA pol  $\delta$ 3 Polyclonal Antibody diluted at 1: 500 cells nucleus extracted by Minute TM Cytoplasmic and Nuclear Fractionation kit (SC-003, Inventbiotech, MN, USA) .

## Note

For research use only.

**Product Name: DNA pol  $\delta$ 3 Rabbit Polyclonal Antibody**  
**Catalog #: APRab10057**

---

