

Product Name: DNA pol δ cat Rabbit Polyclonal Antibody
Catalog #: APRab10056

Summary

Production Name	DNA pol δ cat Rabbit Polyclonal Antibody
Description	Rabbit Polyclonal Antibody
Host	Rabbit
Application	WB
Reactivity	Human,Mouse,Rat

Performance

Conjugation	Unconjugated
Modification	Unmodified
Isotype	IgG
Clonality	Polyclonal
Form	Liquid
Storage	Store at 4°C short term. Aliquot and store at -20°C long term. Avoid freeze/thaw cycles.
Buffer	Liquid in PBS containing 50% glycerol, 0.5% BSA and 0.02% New type preservative N.
Purification	Affinity purification

Immunogen

Gene Name	POLD1
Alternative Names	POLD1; POLD; DNA polymerase delta catalytic subunit; DNA polymerase subunit delta p125
Gene ID	5424.0
SwissProt ID	P28340.The antiserum was produced against synthesized peptide derived from human POLD1. AA range:1051-1100

Application

Dilution Ratio	WB 1:500-1:2000. ELISA: 1:40000.
Molecular Weight	110 124kD

Product Name: DNA pol δ cat Rabbit Polyclonal Antibody
Catalog #: APRab10056

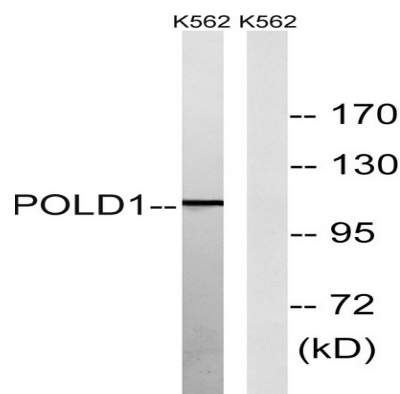
Background

This gene encodes the 125-kDa catalytic subunit of DNA polymerase delta. DNA polymerase delta possesses both polymerase and 3' to 5' exonuclease activity and plays a critical role in DNA replication and repair. Alternatively spliced transcript variants have been observed for this gene, and a pseudogene of this gene is located on the long arm of chromosome 6. [provided by RefSeq, Mar 2012],catalytic activity:Deoxynucleoside triphosphate + DNA(n) = diphosphate + DNA(n+1),function:Possesses two enzymatic activities: DNA synthesis (polymerase) and an exonucleolytic activity that degrades single stranded DNA in the 3'- to 5'-direction. Required with its accessory proteins (proliferating cell nuclear antigen (PCNA) and replication factor C (RFC) or activator 1) for leading strand synthesis. Also involved in completing Okazaki fragments initiated by the DNA polymerase alpha/primase complex.,miscellaneous:In eukaryotes there are five DNA polymerases: alpha, beta, gamma, delta, and epsilon which are responsible for different reactions of DNA synthesis.,similarity:Belongs to the DNA polymerase type-B family.,subunit:Heterotetramer composed of subunits of 125 kDa, 50 kDa, 66 kDa and 12 kDa. The 125 kDa subunit contains the polymerase active site and most likely the active site for the 3'-5' exonuclease activity. Interacts with WRNIP1. Interacts with POLD4 and PCNA.,

Research Area

Purine metabolism;Pyrimidine metabolism;DNA replication;Base excision repair;Nucleotide excision repair;Mismatch repair;Homologous recombination;

Image Data



Western blot analysis of lysates from K562 cells, using POLD1 Antibody. The lane on the right is blocked with the synthesized peptide.

Note

For research use only.