

**Product Name: Dlx-5 Rabbit Polyclonal Antibody**  
**Catalog #: APRab10030**



## Summary

<b>Production Name</b>	Dlx-5 Rabbit Polyclonal Antibody
<b>Description</b>	Rabbit Polyclonal Antibody
<b>Host</b>	Rabbit
<b>Application</b>	IHC, WB, ELISA
<b>Reactivity</b>	Human, Mouse, Rat

## Performance

<b>Conjugation</b>	Unconjugated
<b>Modification</b>	Unmodified
<b>Isotype</b>	IgG
<b>Clonality</b>	Polyclonal
<b>Form</b>	Liquid
<b>Storage</b>	Store at 4°C short term. Aliquot and store at -20°C long term. Avoid freeze/thaw cycles.
<b>Buffer</b>	Liquid in PBS containing 50% glycerol, 0.5% BSA and 0.02% New type preservative N.
<b>Purification</b>	Affinity purification

## Immunogen

<b>Gene Name</b>	DLX5
<b>Alternative Names</b>	DLX5; Homeobox protein DLX-5
<b>Gene ID</b>	1749.0
<b>SwissProt ID</b>	P56178. The antiserum was produced against synthesized peptide derived from human DLX5. AA range: 91-140

## Application

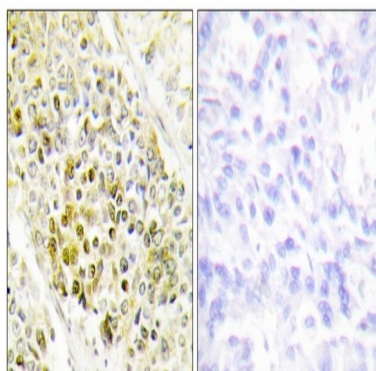
<b>Dilution Ratio</b>	WB 1:500 - 1:2000. IHC 1:100 - 1:300. . ELISA: 1:40000. Not yet tested in other applications.
<b>Molecular Weight</b>	27kD

## Background

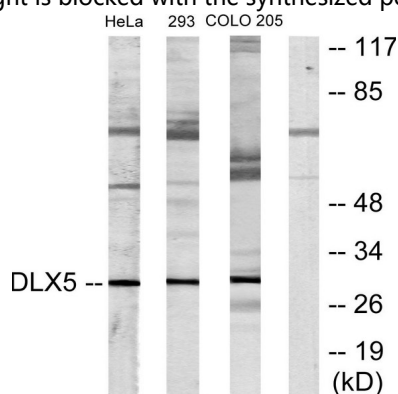
This gene encodes a member of a homeobox transcription factor gene family similar to the Drosophila distal-less gene. The encoded protein may play a role in bone development and fracture healing. Mutation in this gene, which is located in a tail-to-tail configuration with another member of the family on the long arm of chromosome 7, may be associated with split-hand/split-foot malformation. [provided by RefSeq, Jul 2008],developmental stage:First expressed in embryos at 8.5-9 days in facial and branchial arch mesenchyme, otic vesicles and frontonasal ectoderm around olfactory placodes, a day later expression is seen in the developing forebrain in primordia of the ganglionic eminence and ventral diencephalic regions. In day 12.5 embryos, expressed in the brain and bones, and also in all skeletal structures of midgestation embryos after the first cartilage formation. Expression remains unaltered in both brain and skeleton in day 15 embryos and slowly decreases in day 17 embryos.,similarity:Belongs to the distal-less homeobox family.,similarity:Contains 1 homeobox DNA-binding domain.,subunit:Interacts with G22P1 (Ku70),

## Research Area

## Image Data



Immunohistochemistry analysis of paraffin-embedded human lung carcinoma tissue, using DLX5 Antibody. The picture on the right is blocked with the synthesized peptide.

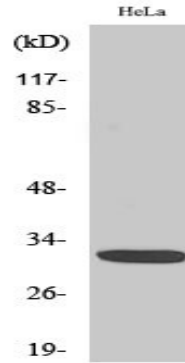


Western blot analysis of lysates from HeLa, 293, and COLO205 cells, using DLX5 Antibody. The lane on the right is blocked

**Product Name: Dlx-5 Rabbit Polyclonal Antibody**  
**Catalog #: APRab10030**



with the synthesized peptide.



Western Blot analysis of various cells using Dlx-5 Polyclonal Antibody diluted at 1 : 500

**Note**

For research use only.