

---

## Summary

<b>Production Name</b>	Dlx-4 Rabbit Polyclonal Antibody
<b>Description</b>	Rabbit Polyclonal Antibody
<b>Host</b>	Rabbit
<b>Application</b>	WB,ELISA
<b>Reactivity</b>	Human,Rat,Mouse

## Performance

<b>Conjugation</b>	Unconjugated
<b>Modification</b>	Unmodified
<b>Isotype</b>	IgG
<b>Clonality</b>	Polyclonal
<b>Form</b>	Liquid
<b>Storage</b>	Store at 4°C short term. Aliquot and store at -20°C long term. Avoid freeze/thaw cycles.
<b>Buffer</b>	Liquid in PBS containing 50% glycerol, 0.5% BSA and 0.02% New type preservative N.
<b>Purification</b>	Affinity purification

## Immunogen

<b>Gene Name</b>	DLX4
<b>Alternative Names</b>	DLX4; BP1; DLX7; DLX8; DLX9; Homeobox protein DLX-4; Beta protein 1; Homeobox protein DLX-7; Homeobox protein DLX-8
<b>Gene ID</b>	1748.0
<b>SwissProt ID</b>	Q92988.The antiserum was produced against synthesized peptide derived from human DLX4. AA range:61-110

## Application

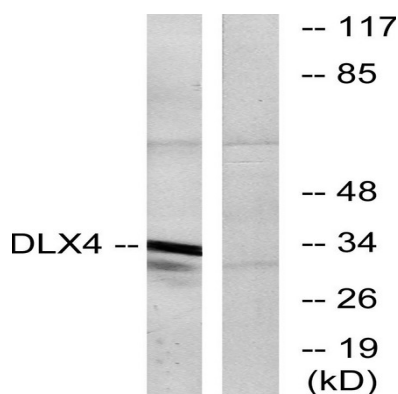
<b>Dilution Ratio</b>	WB 1:500 - 1:2000. ELISA: 1:5000
<b>Molecular Weight</b>	34kD

## Background

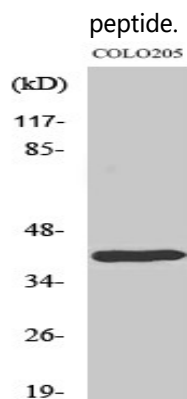
Many vertebrate homeo box-containing genes have been identified on the basis of their sequence similarity with Drosophila developmental genes. Members of the Dlx gene family contain a homeobox that is related to that of Distal-less (Dll), a gene expressed in the head and limbs of the developing fruit fly. The Distal-less (Dlx) family of genes comprises at least 6 different members, DLX1-DLX6. The DLX proteins are postulated to play a role in forebrain and craniofacial development. Three transcript variants have been described for this gene, however, the full length nature of one variant has not been described. Studies of the two splice variants revealed that one encoded isoform functions as a repressor of the beta-globin gene while the other isoform lacks that function. [provided by RefSeq, Jul 2008], alternative products: Additional isoforms seem to exist. Ref.8 (AAC51171) sequence may be an additional isoform, function: May play a role in determining the production of hemoglobin S. May act as a repressor., similarity: Belongs to the distal-less homeobox family., similarity: Contains 1 homeobox DNA-binding domain., tissue specificity: Expressed in leukemia cells and placenta. Also expressed in kidney and fetal liver.,

## Research Area

## Image Data



Western blot analysis of lysates from COLO cells, using DLX4 Antibody. The lane on the right is blocked with the synthesized peptide.



**Product Name: Dlx-4 Rabbit Polyclonal Antibody**  
**Catalog #: APRab10028**



---

Western Blot analysis of various cells using Dlx-4 Polyclonal Antibody cells nucleus extracted by Minute TM Cytoplasmic and Nuclear Fractionation kit (SC-003, Inventbiotech, MN, USA) .

**Note**

For research use only.