

Summary

Production Name	Di-Ras1 Rabbit Polyclonal Antibody
Description	Rabbit Polyclonal Antibody
Host	Rabbit
Application	WB,ELISA
Reactivity	Human,Rat,Mouse

Performance

Conjugation	Unconjugated
Modification	Unmodified
Isotype	IgG
Clonality	Polyclonal
Form	Liquid
Storage	Store at 4°C short term. Aliquot and store at -20°C long term. Avoid freeze/thaw cycles.
Buffer	Liquid in PBS containing 50% glycerol, 0.5% BSA and 0.02% New type preservative N.
Purification	Affinity purification

Immunogen

Gene Name	DIRAS1
Alternative Names	DIRAS1; GBTS1; RIG; GTP-binding protein Di-Ras1; Distinct subgroup of the Ras family member 1; Ras-related inhibitor of cell growth; Rig; Small GTP-binding tumor suppressor 1
Gene ID	148252.0
SwissProt ID	O95057.The antiserum was produced against synthesized peptide derived from human DIRA1. AA range:149-198

Application

Dilution Ratio	WB 1:500 - 1:2000. ELISA: 1:20000
Molecular Weight	22kD

Product Name: Di-Ras1 Rabbit Polyclonal Antibody
Catalog #: APRab09990

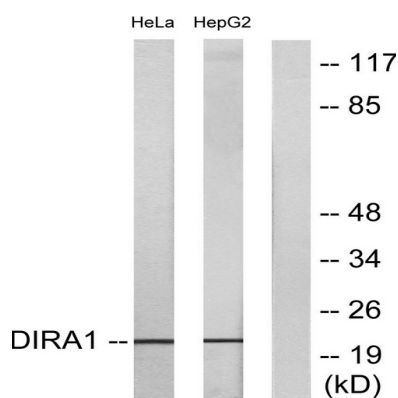


Background

DIRAS1 belongs to a distinct branch of the functionally diverse Ras (see HRAS; MIM 190020) superfamily of monomeric GTPases. [supplied by OMIM, Apr 2004], function: Displays low GTPase activity and exist predominantly in the GTP-bound form., similarity: Belongs to the small GTPase superfamily. Di-Ras family., tissue specificity: Highly expressed in heart and brain.,

Research Area

Image Data



Western blot analysis of lysates from HeLa and HepG2 cells, using DIRA1 Antibody. The lane on the right is blocked with the synthesized peptide.



Western Blot analysis of various cells using Di-Ras1 Polyclonal Antibody

Note

For research use only.