
Summary

Production Name	DHRS2 Rabbit Polyclonal Antibody
Description	Rabbit Polyclonal Antibody
Host	Rabbit
Application	WB,ELISA
Reactivity	Human,Mouse

Performance

Conjugation	Unconjugated
Modification	Unmodified
Isotype	IgG
Clonality	Polyclonal
Form	Liquid
Storage	Store at 4°C short term. Aliquot and store at -20°C long term. Avoid freeze/thaw cycles.
Buffer	Liquid in PBS containing 50% glycerol, 0.5% BSA and 0.02% New type preservative N.
Purification	Affinity purification

Immunogen

Gene Name	DHRS2
Alternative Names	DHRS2; Dehydrogenase/reductase SDR family member 2; Dicarbonyl reductase HEP27; Protein D
Gene ID	10202.0
SwissProt ID	Q13268.The antiserum was produced against synthesized peptide derived from human DHRS2. AA range:111-160

Application

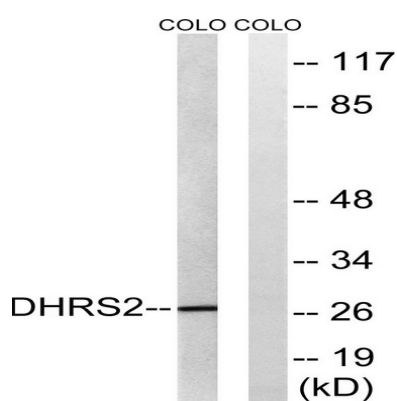
Dilution Ratio	WB 1:500 - 1:2000. ELISA: 1:40000. Not yet tested in other applications.
Molecular Weight	27kD

Background

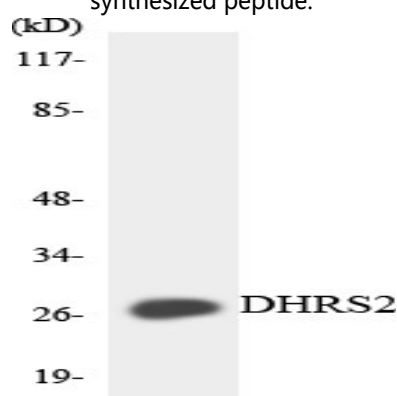
function:May inhibit cell replication either by catalyzing the oxidation of estrogen and androgen or by converting cortisone in cortisol.,similarity:Belongs to the short-chain dehydrogenases/reductases (SDR) family.,function:May inhibit cell replication either by catalyzing the oxidation of estrogen and androgen or by converting cortisone in cortisol.,similarity:Belongs to the short-chain dehydrogenases/reductases (SDR) family.,

Research Area

Image Data

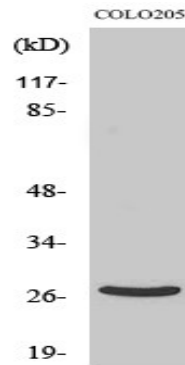


Western blot analysis of lysates from COLO cells, using DHRS2 Antibody. The lane on the right is blocked with the synthesized peptide.



Western blot analysis of the lysates from HeLa cells using DHRS2 antibody.

Product Name: DHRS2 Rabbit Polyclonal Antibody
Catalog #: APRab09970



Western Blot analysis of various cells using DHRS2 Polyclonal Antibody

Note

For research use only.