

Product Name: DEF-3 Rabbit Polyclonal Antibody
Catalog #: APRab09900



Summary

Production Name	DEF-3 Rabbit Polyclonal Antibody
Description	Rabbit Polyclonal Antibody
Host	Rabbit
Application	IF,IHC,WB,
Reactivity	Human,Mouse

Performance

Conjugation	Unconjugated
Modification	Unmodified
Isotype	IgG
Clonality	Polyclonal
Form	Liquid
Storage	Store at 4°C short term. Aliquot and store at -20°C long term. Avoid freeze/thaw cycles.
Buffer	Liquid in PBS containing 50% glycerol, 0.5% BSA and 0.02% New type preservative N.
Purification	Affinity purification

Immunogen

Gene Name	RBM6
Alternative Names	RBM6; DEF3; RNA-binding protein 6; Lung cancer antigen NY-LU-12; Protein G16; RNA-binding motif protein 6; RNA-binding protein DEF-3
Gene ID	10180.0
SwissProt ID	P78332.The antiserum was produced against synthesized peptide derived from human RBM6. AA range:991-1040

Application

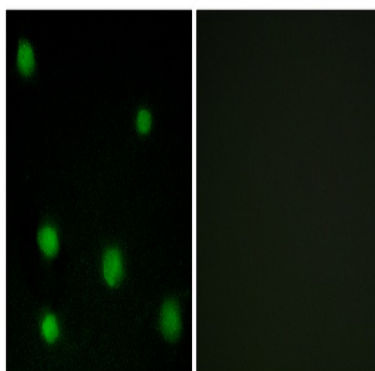
Dilution Ratio	WB 1:500 - 1:2000 IHC 1:100 - 1:300. IF 1:200 - 1:1000. ELISA: 1:20000. Not yet tested in other applications.
Molecular Weight	150kD

Background

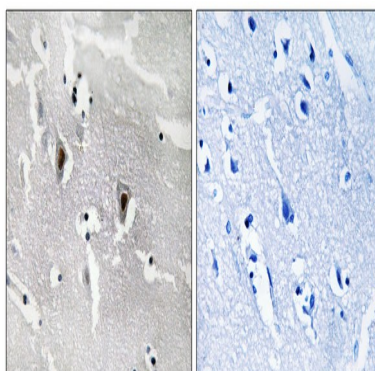
disease:Defects in RBM6 are found in non-small cell lung cancer (NSCLC) cell lines.,function:Specifically binds poly(G) RNA homopolymers in vitro.,PTM:Phosphorylated upon DNA damage, probably by ATM or ATR.,similarity:Contains 1 G-patch domain.,similarity:Contains 1 RRM (RNA recognition motif) domain.,tissue specificity:Ubiquitous in adults.,disease:Defects in RBM6 are found in non-small cell lung cancer (NSCLC) cell lines.,function:Specifically binds poly(G) RNA homopolymers in vitro.,PTM:Phosphorylated upon DNA damage, probably by ATM or ATR.,similarity:Contains 1 G-patch domain.,similarity:Contains 1 RRM (RNA recognition motif) domain.,tissue specificity:Ubiquitous in adults.,

Research Area

Image Data

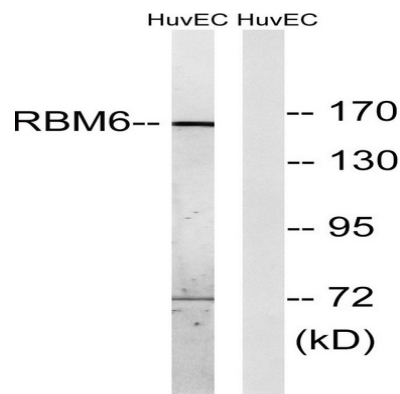


Immunofluorescence analysis of COS7 cells, using RBM6 Antibody. The picture on the right is blocked with the synthesized peptide.

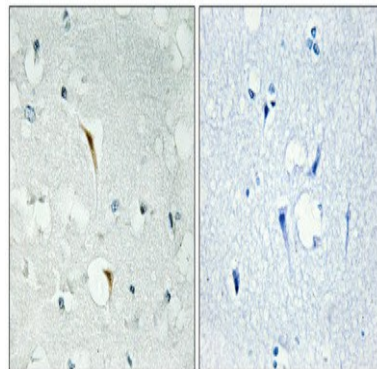


Immunohistochemistry analysis of paraffin-embedded human brain tissue, using RBM6 Antibody. The picture on the right is blocked with the synthesized peptide.

Product Name: DEF-3 Rabbit Polyclonal Antibody
Catalog #: APRab09900



Western blot analysis of lysates from HUVEC cells, using RBM6 Antibody. The lane on the right is blocked with the synthesized peptide.



Immunohistochemical analysis of paraffin-embedded Human brain. Antibody was diluted at 1:100 (4°, overnight) . High-pressure and temperature Tris-EDTA, pH8.0 was used for antigen retrieval. Negative control (right) obtained from antibody was pre-absorbed by immunogen peptide.

Note

For research use only.