
Summary

Production Name	DDX55 Rabbit Polyclonal Antibody
Description	Rabbit Polyclonal Antibody
Host	Rabbit
Application	WB,IHC,ELISA
Reactivity	Human,Mouse

Performance

Conjugation	Unconjugated
Modification	Unmodified
Isotype	IgG
Clonality	Polyclonal
Form	Liquid
Storage	Store at 4°C short term. Aliquot and store at -20°C long term. Avoid freeze/thaw cycles.
Buffer	Liquid in PBS containing 50% glycerol, 0.5% BSA and 0.02% New type preservative N.
Purification	Affinity purification

Immunogen

Gene Name	DDX55
Alternative Names	DDX55; KIAA1595; ATP-dependent RNA helicase DDX55; DEAD box protein 55
Gene ID	57696.0
SwissProt ID	Q8NHQ9.The antiserum was produced against synthesized peptide derived from human DDX55. AA range:91-140

Application

Dilution Ratio	WB 1:500 - 1:2000. IHC 1:100 - 1:300. ELISA: 1:40000..
Molecular Weight	68kD

Background

Product Name: DDX55 Rabbit Polyclonal Antibody
Catalog #: APRab09891



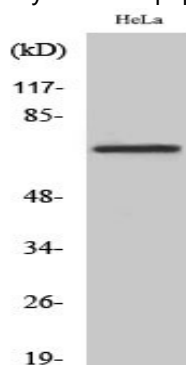
This gene encodes a member of protein family containing a characteristic Asp-Glu-Ala-Asp (DEAD) motif. These proteins are putative RNA helicases, and may be involved in a range of nuclear processes including translational initiation, nuclear and mitochondrial splicing, and ribosome and spliceosome assembly. Multiple alternatively spliced transcript variants have been found for this gene. Pseudogenes have been identified on chromosomes 1 and 12. [provided by RefSeq, Feb 2016],domain:The Q motif is unique to and characteristic of the DEAD box family of RNA helicases and controls ATP binding and hydrolysis.,function:Probable ATP-binding RNA helicase.,similarity:Belongs to the DEAD box helicase family.,similarity:Belongs to the DEAD box helicase family. DDX55/SPB4 subfamily.,similarity:Contains 1 helicase ATP-binding domain.,similarity:Contains 1 helicase C-terminal domain.,

Research Area

Image Data

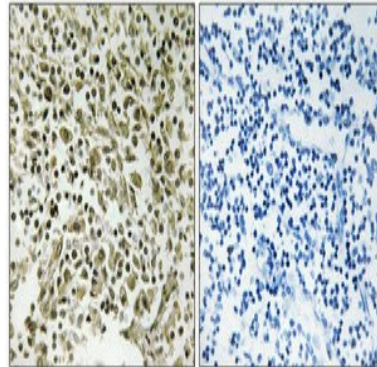


Western blot analysis of lysates from HeLa cells, using DDX55 Antibody. The lane on the right is blocked with the synthesized peptide.



Western Blot analysis of various cells using DDX55 Polyclonal Antibody diluted at 1: 500

Product Name: DDX55 Rabbit Polyclonal Antibody
Catalog #: APRab09891



Immunohistochemical analysis of paraffin-embedded Human lung cancer. Antibody was diluted at 1:100 (4°,overnight) . High-pressure and temperature Tris-EDTA,pH8.0 was used for antigen retrieval. Negative contrl (right) obtaned from antibody was pre-absorbed by immunogen peptide.

Note

For research use only.