
Summary

Production Name	DDX51 Rabbit Polyclonal Antibody
Description	Rabbit Polyclonal Antibody
Host	Rabbit
Application	WB,IHC
Reactivity	Human,Rat,Mouse

Performance

Conjugation	Unconjugated
Modification	Unmodified
Isotype	IgG
Clonality	Polyclonal
Form	Liquid
Storage	Store at 4°C short term. Aliquot and store at -20°C long term. Avoid freeze/thaw cycles.
Buffer	Liquid in PBS containing 50% glycerol, 0.5% BSA and 0.02% New type preservative N.
Purification	Affinity purification

Immunogen

Gene Name	DDX51
Alternative Names	DDX51; ATP-dependent RNA helicase DDX51; DEAD box protein 51
Gene ID	317781.0
SwissProt ID	Q8N8A6.The antiserum was produced against synthesized peptide derived from human DDX51. AA range:617-666

Application

Dilution Ratio	WB 1:500 - 1:2000. IHC 1:100 - 1:300. ELISA: 1:40000..
Molecular Weight	72kD

Background

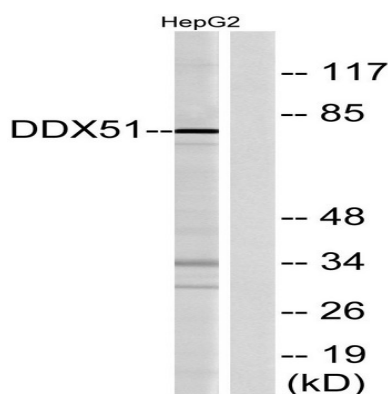
Product Name: DDX51 Rabbit Polyclonal Antibody
Catalog #: APRab09887



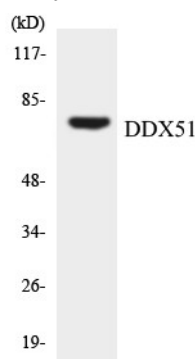
domain: The Q motif is unique to and characteristic of the DEAD box family of RNA helicases and controls ATP binding and hydrolysis., function: ATP-binding RNA helicase involved in the biogenesis of 60S ribosomal subunits., similarity: Belongs to the DEAD box helicase family. DDX51/DBP6 subfamily., similarity: Contains 1 helicase ATP-binding domain., similarity: Contains 1 helicase C-terminal domain., domain: The Q motif is unique to and characteristic of the DEAD box family of RNA helicases and controls ATP binding and hydrolysis., function: ATP-binding RNA helicase involved in the biogenesis of 60S ribosomal subunits., similarity: Belongs to the DEAD box helicase family. DDX51/DBP6 subfamily., similarity: Contains 1 helicase ATP-binding domain., similarity: Contains 1 helicase C-terminal domain.,

Research Area

Image Data

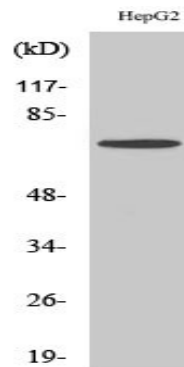


Western blot analysis of lysates from HepG2 cells, using DDX51 Antibody. The lane on the right is blocked with the synthesized peptide.

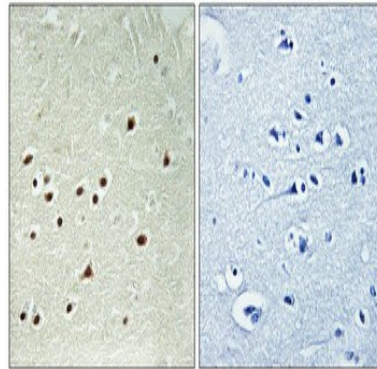


Western blot analysis of the lysates from K562 cells using DDX51 antibody.

Product Name: DDX51 Rabbit Polyclonal Antibody
Catalog #: APRab09887



Western Blot analysis of various cells using DDX51 Polyclonal Antibody cells nucleus extracted by Minute TM Cytoplasmic and Nuclear Fractionation kit (SC-003, Inventbiotech, MN, USA) .



Immunohistochemical analysis of paraffin-embedded Human brain. Antibody was diluted at 1:100 (4°, overnight) . High-pressure and temperature Tris-EDTA, pH 8.0 was used for antigen retrieval. Negative control (right) obtained from antibody was pre-absorbed by immunogen peptide.

Note

For research use only.