
Summary

Production Name	DCT Rabbit Polyclonal Antibody
Description	Rabbit Polyclonal Antibody
Host	Rabbit
Application	WB,IHC,ELISA
Reactivity	Human,Rat,Mouse

Performance

Conjugation	Unconjugated
Modification	Unmodified
Isotype	IgG
Clonality	Polyclonal
Form	Liquid
Storage	Store at 4°C short term. Aliquot and store at -20°C long term. Avoid freeze/thaw cycles.
Buffer	Liquid in PBS containing 50% glycerol, 0.5% BSA and 0.02% New type preservative N.
Purification	Affinity purification

Immunogen

Gene Name	DCT TYRP2
Alternative Names	L-dopachrome tautomerase (DCT;DT;EC 5.3.3.12;L-dopachrome Delta-isomerase;Tyrosinase-related protein 2;TRP-2;TRP2)
Gene ID	1638.0
SwissProt ID	P40126.Synthetic peptide from human protein at AA range: 232-304

Application

Dilution Ratio	WB 1:500-2000,IHC-p 1:500-200, ELISA 1:10000-20000.
Molecular Weight	59kD

Background

Product Name: DCT Rabbit Polyclonal Antibody
Catalog #: APRab09850

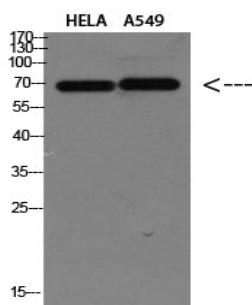


catalytic activity:L-dopachrome = 5,6-dihydroxyindole-2-carboxylate.,cofactor:Binds 2 zinc ions per subunit.,function:Involved in regulating eumelanin and phaeomelanin levels.,pathway:Pigment biosynthesis; melanin biosynthesis.,similarity:Belongs to the tyrosinase family.,subunit:Tyrosinase, TYRP1 and TYRP2 may form a multienzyme complex.,catalytic activity:L-dopachrome = 5,6-dihydroxyindole-2-carboxylate.,cofactor:Binds 2 zinc ions per subunit.,function:Involved in regulating eumelanin and phaeomelanin levels.,pathway:Pigment biosynthesis; melanin biosynthesis.,similarity:Belongs to the tyrosinase family.,subunit:Tyrosinase, TYRP1 and TYRP2 may form a multienzyme complex.,

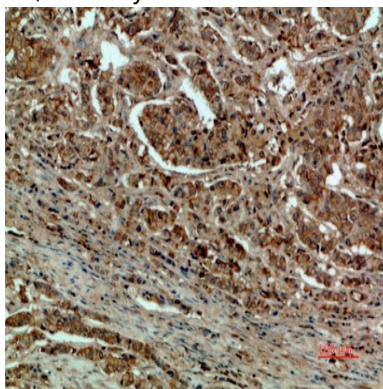
Research Area

Tyrosine metabolism;Melanogenesis;

Image Data



Western blot analysis of HELA A549 Cell Lysate, antibody was diluted at 1:1000. Secondary antibody was diluted at 1:20000



Immunohistochemical analysis of paraffin-embedded human-breast-cancer, antibody was diluted at 1:200

Note

For research use only.