

Summary

Production Name	DAPK2 Rabbit Polyclonal Antibody
Description	Rabbit Polyclonal Antibody
Host	Rabbit
Application	IHC,
Reactivity	Human,Mouse,Rat

Performance

Conjugation	Unconjugated
Modification	Unmodified
Isotype	IgG
Clonality	Polyclonal
Form	Liquid
Storage	Store at 4°C short term. Aliquot and store at -20°C long term. Avoid freeze/thaw cycles.
Buffer	Liquid in PBS containing 50% glycerol, 0.5% BSA and 0.02% New type preservative N.
Purification	Affinity purification

Immunogen

Gene Name	DAPK2
Alternative Names	DAPK2; Death-associated protein kinase 2; DAP kinase 2; DAP-kinase-related protein 1; DRP-1
Gene ID	23604.0
SwissProt ID	Q9UIK4.The antiserum was produced against synthesized peptide derived from human DAPK2. AA range:284-333

Application

Dilution Ratio	IHC 1:100 - 1:300. ELISA: 1:5000..
Molecular Weight	

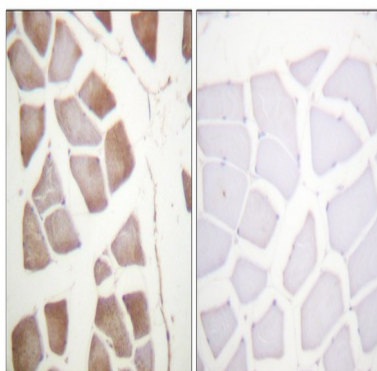
Background

This gene encodes a protein that belongs to the serine/threonine protein kinase family. This protein contains a N-terminal protein kinase domain followed by a conserved calmodulin-binding domain with significant similarity to that of death-associated protein kinase 1 (DAPK1), a positive regulator of programmed cell death. Overexpression of this gene was shown to induce cell apoptosis. It uses multiple polyadenylation sites. [provided by RefSeq, Jul 2008],catalytic activity:ATP + a protein = ADP + a phosphoprotein.,cofactor:Magnesium.,enzyme regulation:Negatively regulated by autophosphorylation on Ser-318.,function:Calcium/calmodulin-dependent serine/threonine kinase which acts as a positive regulator of apoptosis.,similarity:Belongs to the protein kinase superfamily. CAMK Ser/Thr protein kinase family. DAP kinase subfamily.,similarity:Contains 1 protein kinase domain.,subunit:Homodimer. Homodimerization is required for apoptotic function and is inhibited by autophosphorylation at Ser-318.,tissue specificity:Ubiquitously expressed in all tissue types examined. High levels in heart, lung and skeletal muscle.,

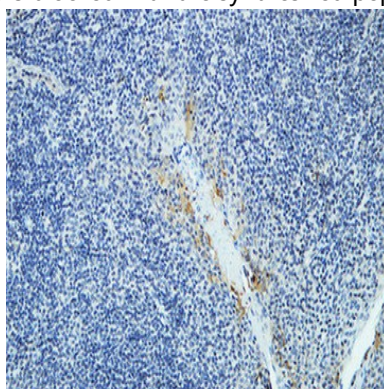
Research Area

Pathways in cancer;Bladder cancer;

Image Data



Immunohistochemistry analysis of paraffin-embedded human skeletal muscle, using DAPK2 Antibody. The picture on the right is blocked with the synthesized peptide.

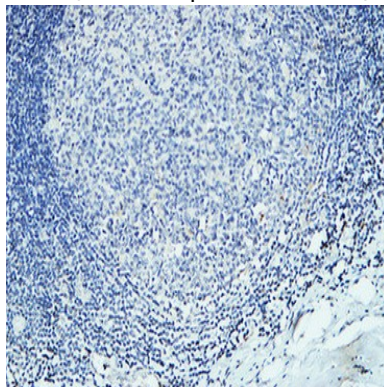


Immunohistochemical analysis of paraffin-embedded Human Amygdala. 1, Antibody was diluted at 1:100 (4°,overnight) . 2,

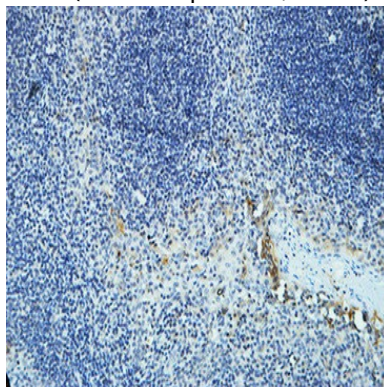
Product Name: DAPK2 Rabbit Polyclonal Antibody
Catalog #: APRab09788



High-pressure and temperature EDTA, pH8.0 was used for antigen retrieval. 3,Secondary antibody was diluted at 1:200 (room temperature, 30min) .



Immunohistochemical analysis of paraffin-embedded Human Amygdala. 1, Antibody was diluted at 1:100 (4°,overnight) . 2, High-pressure and temperature EDTA, pH8.0 was used for antigen retrieval. 3,Secondary antibody was diluted at 1:200 (room temperature, 30min) .



Immunohistochemical analysis of paraffin-embedded Human Amygdala. 1, Antibody was diluted at 1:100 (4°,overnight) . 2, High-pressure and temperature EDTA, pH8.0 was used for antigen retrieval. 3,Secondary antibody was diluted at 1:200 (room temperature, 30min) .

Note

For research use only.