
Summary

Production Name	Dab1 Rabbit Polyclonal Antibody
Description	Rabbit Polyclonal Antibody
Host	Rabbit
Application	IF, WB,
Reactivity	Human, Mouse, Rat

Performance

Conjugation	Unconjugated
Modification	Unmodified
Isotype	IgG
Clonality	Polyclonal
Form	Liquid
Storage	Store at 4°C short term. Aliquot and store at -20°C long term. Avoid freeze/thaw cycles.
Buffer	Liquid in PBS containing 50% glycerol, 0.5% BSA and 0.02% New type preservative N.
Purification	Affinity purification

Immunogen

Gene Name	DAB1
Alternative Names	DAB1; Disabled homolog 1
Gene ID	1600.0
SwissProt ID	O75553. The antiserum was produced against synthesized peptide derived from human Dab1. AA range: 199-248

Application

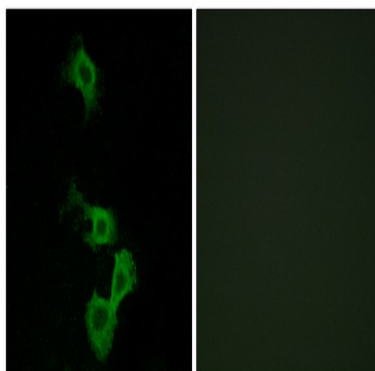
Dilution Ratio	WB 1:500 - 1:2000. IF 1:200 - 1:1000. ELISA: 1:20000. Not yet tested in other applications.
Molecular Weight	80kD

Background

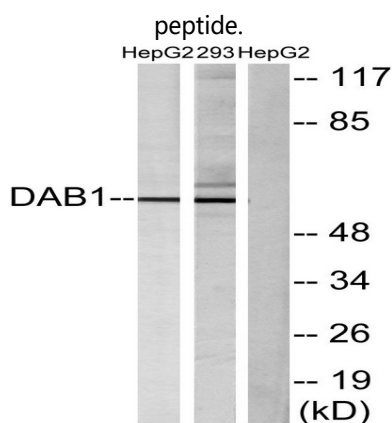
The laminar organization of multiple neuronal types in the cerebral cortex is required for normal cognitive function. In mice, the disabled-1 gene plays a central role in brain development, directing the migration of cortical neurons past previously formed neurons to reach their proper layer. This gene is similar to disabled-1, and the protein encoded by this gene is thought to be a signal transducer that interacts with protein kinase pathways to regulate neuronal positioning in the developing brain. Alternatively spliced transcript variants of this gene have been reported, but their full length nature has not been determined. [provided by RefSeq, Jul 2008],domain:The PID domain specifically binds to the Asn-Pro-Xaa-Tyr(P) motif found in many tyrosine-phosphorylated proteins.,function:Adapter molecule functioning in neural development. May regulate SIAH1 activity.,PTM:Phosphorylated on Tyr-198 and Tyr-220 upon reelin induction in embryonic neurons (By similarity). Also phosphorylated on Ser-524 independently of reelin signaling.,similarity:Contains 1 PID domain.,subunit:Associates with the SH2 domains of SRC, FYN and ABL. Interacts with DAB2IP and SIAH1 (By similarity). Interacts with LRP1.,

Research Area

Image Data



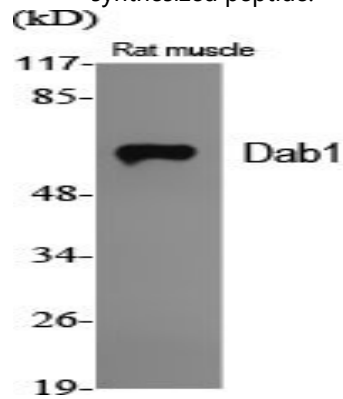
Immunofluorescence analysis of MCF7 cells, using Dab1 Antibody. The picture on the right is blocked with the synthesized



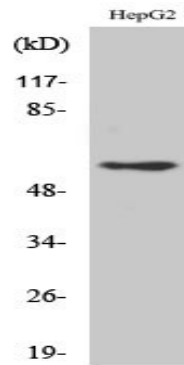
Product Name: Dab1 Rabbit Polyclonal Antibody
Catalog #: APRab09774



Western blot analysis of lysates from HepG2 and 293 cells, using Dab1 Antibody. The lane on the right is blocked with the synthesized peptide.



Western Blot analysis of various cells using Dab1 Polyclonal Antibody



Western Blot analysis of 293 cells using Dab1 Polyclonal Antibody

Note

For research use only.