

**Product Name: Cytokeratin 15 Rabbit Polyclonal Antibody**  
**Catalog #: APRab09730**

---

## Summary

<b>Production Name</b>	Cytokeratin 15 Rabbit Polyclonal Antibody
<b>Description</b>	Rabbit Polyclonal Antibody
<b>Host</b>	Rabbit
<b>Application</b>	IHC,WB,
<b>Reactivity</b>	Human,Mouse,Rat,Monkey

## Performance

<b>Conjugation</b>	Unconjugated
<b>Modification</b>	Unmodified
<b>Isotype</b>	IgG
<b>Clonality</b>	Polyclonal
<b>Form</b>	Liquid
<b>Storage</b>	Store at 4°C short term. Aliquot and store at -20°C long term. Avoid freeze/thaw cycles.
<b>Buffer</b>	Liquid in PBS containing 50% glycerol, 0.5% BSA and 0.02% New type preservative N.
<b>Purification</b>	Affinity purification

## Immunogen

<b>Gene Name</b>	KRT15
<b>Alternative Names</b>	KRT15; KRTB; Keratin; type I cytoskeletal 15; Cytokeratin-15; CK-15; Keratin-15; K15
<b>Gene ID</b>	3866.0
<b>SwissProt ID</b>	P19012.The antiserum was produced against synthesized peptide derived from human Keratin 15. AA range:1-50

## Application

<b>Dilution Ratio</b>	WB 1:500 - 1:2000. IHC 1:100 - 1:300. ELISA: 1:20000..
<b>Molecular Weight</b>	50kD

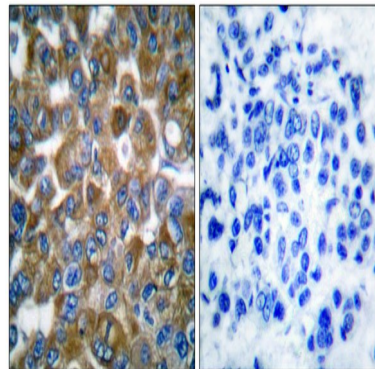
**Product Name: Cytokeratin 15 Rabbit Polyclonal Antibody**  
**Catalog #: APRab09730**

## Background

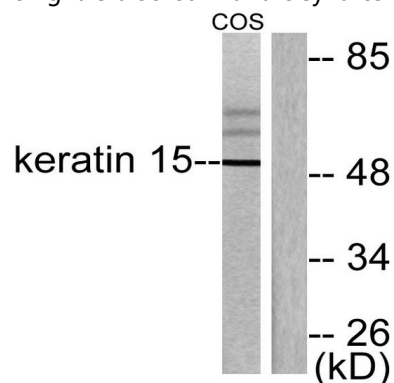
The protein encoded by this gene is a member of the keratin gene family. The keratins are intermediate filament proteins responsible for the structural integrity of epithelial cells and are subdivided into cytokeratins and hair keratins. Most of the type I cytokeratins consist of acidic proteins which are arranged in pairs of heterotypic keratin chains and are clustered in a region on chromosome 17q21.2. [provided by RefSeq, Jul 2008],miscellaneous:There are two types of cytoskeletal and microfibrillar keratin: I (acidic; 40-55 kDa) and II (neutral to basic; 56-70 kDa),similarity:Belongs to the intermediate filament family,subunit:Heterotetramer of two type I and two type II keratins,tissue specificity:Expressed in a discontinuous manner in the basal cell layer of adult skin epidermis, but continuously in the basal layer of fetal skin epidermis and nail. Also expressed in the outer root sheath above the hair bulb in hair follicle (at protein level). Expressed homogeneously in all cell layers of the esophagus and exocervix, but detected in the basal cell layer only of oral mucosa, skin and in the basal plus the next two layers of the suprabasal epithelium of the palate,.

## Research Area

## Image Data

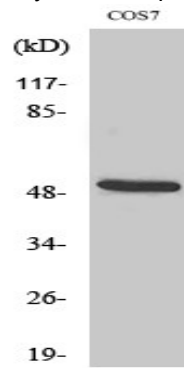


Immunohistochemistry analysis of paraffin-embedded human breast carcinoma tissue, using Keratin 15 Antibody. The picture on the right is blocked with the synthesized peptide.

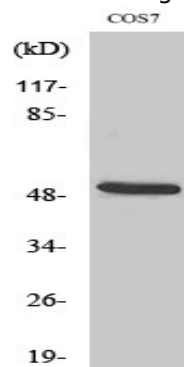


**Product Name: Cytokeratin 15 Rabbit Polyclonal Antibody**  
**Catalog #: APRab09730**

Western blot analysis of lysates from COS7 cells, using Keratin 15 Antibody. The lane on the right is blocked with the synthesized peptide.



Western Blot analysis of various cells using Cytokeratin 15 Polyclonal Antibody



Western Blot analysis of COS7 cells using Cytokeratin 15 Polyclonal Antibody

## Note

For research use only.