
Summary

Production Name	Cystatin SN Rabbit Polyclonal Antibody
Description	Rabbit Polyclonal Antibody
Host	Rabbit
Application	IF,IHC,WB,ELISA
Reactivity	Human,Rat,Mouse

Performance

Conjugation	Unconjugated
Modification	Unmodified
Isotype	IgG
Clonality	Polyclonal
Form	Liquid
Storage	Store at 4°C short term. Aliquot and store at -20°C long term. Avoid freeze/thaw cycles.
Buffer	Liquid in PBS containing 50% glycerol, 0.5% BSA and 0.02% New type preservative N.
Purification	Affinity purification

Immunogen

Gene Name	CST1
Alternative Names	CST1; Cystatin-SN; Cystatin-SA-I; Cystatin-1; Salivary cystatin-SA-1
Gene ID	1469.0
SwissProt ID	P01037.The antiserum was produced against synthesized peptide derived from human CST1. AA range:31-80

Application

Dilution Ratio	WB 1:500-2000 IHC 1:100 - 1:300. IF 1:200 - 1:1000. ELISA: 1:20000. Not yet tested in other applications.
-----------------------	---

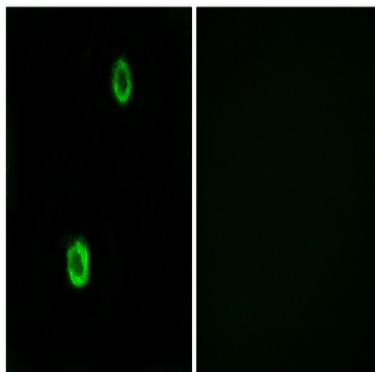
Molecular Weight

Background

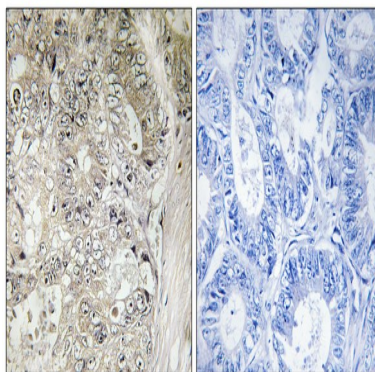
The cystatin superfamily encompasses proteins that contain multiple cystatin-like sequences. Some of the members are active cysteine protease inhibitors, while others have lost or perhaps never acquired this inhibitory activity. There are three inhibitory families in the superfamily, including the type 1 cystatins (stefins), type 2 cystatins and the kininogens. The type 2 cystatin proteins are a class of cysteine proteinase inhibitors found in a variety of human fluids and secretions, where they appear to provide protective functions. The cystatin locus on chromosome 20 contains the majority of the type 2 cystatin genes and pseudogenes. This gene is located in the cystatin locus and encodes a cysteine proteinase inhibitor found in saliva, tears, urine, and seminal fluid. [provided by RefSeq, Jul 2008],function:Human saliva appears to contain several cysteine proteinase inhibitors that are immunologically related to cystatin S but that differ in their specificity due to amino acid sequence differences. Cystatin SN, with a pI of 7.5, is a much better inhibitor of papain and dipeptidyl peptidase I than is cystatin S, although both inhibit ficin equally well.,similarity:Belongs to the cystatin family.,tissue specificity:Found in saliva, tears, urine and seminal fluid.,

Research Area

Image Data



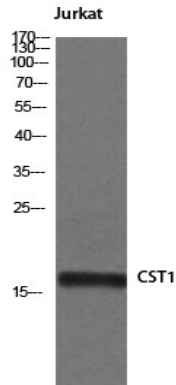
Immunofluorescence analysis of MCF7 cells, using CST1 Antibody. The picture on the right is blocked with the synthesized peptide.



Product Name: Cystatin SN Rabbit Polyclonal Antibody
Catalog #: APRab09700



Immunohistochemistry analysis of paraffin-embedded human colon carcinoma tissue, using CST1 Antibody. The picture on the right is blocked with the synthesized peptide.



Western Blot analysis of Jurkat cells using Cystatin SN Polyclonal Antibody

Note

For research use only.