

## Summary

<b>Production Name</b>	Cystatin E/M Rabbit Polyclonal Antibody
<b>Description</b>	Rabbit Polyclonal Antibody
<b>Host</b>	Rabbit
<b>Application</b>	IHC,ELISA
<b>Reactivity</b>	Human,Rat,Mouse

## Performance

<b>Conjugation</b>	Unconjugated
<b>Modification</b>	Unmodified
<b>Isotype</b>	IgG
<b>Clonality</b>	Polyclonal
<b>Form</b>	Liquid
<b>Storage</b>	Store at 4°C short term. Aliquot and store at -20°C long term. Avoid freeze/thaw cycles.
<b>Buffer</b>	Liquid in PBS containing 50% glycerol, 0.5% BSA and 0.02% New type preservative N.
<b>Purification</b>	Affinity purification

## Immunogen

<b>Gene Name</b>	CST6
<b>Alternative Names</b>	CST6; Cystatin-M; Cystatin-6; Cystatin-E
<b>Gene ID</b>	1474.0
<b>SwissProt ID</b>	Q15828.Synthesized peptide derived from the Internal region of human Cystatin E/M.

## Application

**Dilution Ratio** IHC 1:100-1:300 ELISA: 1:40000

**Molecular Weight**

## Background

The cystatin superfamily encompasses proteins that contain multiple cystatin-like sequences. Some of the members are active cysteine protease inhibitors, while others have lost or perhaps never acquired this inhibitory activity. There are three

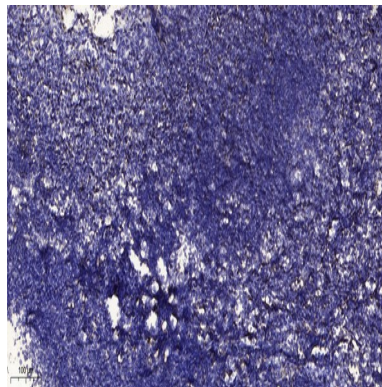
**Product Name: Cystatin E/M Rabbit Polyclonal Antibody**  
**Catalog #: APRab09697**



inhibitory families in the superfamily, including the type 1 cystatins (stefins), type 2 cystatins and the kininogens. The type 2 cystatin proteins are a class of cysteine proteinase inhibitors found in a variety of human fluids and secretions, where they appear to provide protective functions. This gene encodes a cystatin from the type 2 family, which is down-regulated in metastatic breast tumor cells as compared to primary tumor cells. Loss of expression is likely associated with the progression of a primary tumor to a metastatic phenotype. [provided by RefSeq, Jul 2008],function:Shows moderate inhibition of cathepsin B but is not active against cathepsin C.,PTM:Substrate for transglutaminases. Acts as an acyl acceptor but not as an acyl donor.,similarity:Belongs to the cystatin family.,tissue specificity:Restricted to the stratum granulosum of normal skin, the stratum granulosum/spinosum of psoriatic skin, and the secretory coils of eccrine sweat glands. Low expression levels are found in the nasal cavity.,

## Research Area

## Image Data



Immunohistochemical analysis of paraffin-embedded human tonsil. 1, Antibody was diluted at 1:200 (4° overnight) . 2, Tris-EDTA,pH9.0 was used for antigen retrieval. 3,Secondary antibody was diluted at 1:200 (room temperature, 30min) .

## Note

For research use only.