

Summary

| | |
|------------------------|---------------------------------------|
| Production Name | Cystatin A Rabbit Polyclonal Antibody |
| Description | Rabbit Polyclonal Antibody |
| Host | Rabbit |
| Application | WB,IHC, |
| Reactivity | Human,Rat,Mouse |

Performance

| | |
|---------------------|--|
| Conjugation | Unconjugated |
| Modification | Unmodified |
| Isotype | IgG |
| Clonality | Polyclonal |
| Form | Liquid |
| Storage | Store at 4°C short term. Aliquot and store at -20°C long term. Avoid freeze/thaw cycles. |
| Buffer | Liquid in PBS containing 50% glycerol, 0.5% BSA and 0.02% New type preservative N. |
| Purification | Affinity purification |

Immunogen

| | |
|--------------------------|--|
| Gene Name | CSTA STF1 STFA |
| Alternative Names | Cystatin-A (Cystatin-AS;Stefin-A) |
| Gene ID | 1475.0 |
| SwissProt ID | P01040.Synthetic peptide from human protein at AA range: 60-98 |

Application

| | |
|-------------------------|---|
| Dilution Ratio | WB 1:500-2000,IHC-p 1:500-200, ELISA 1:10000-20000. |
| Molecular Weight | 11kD |

Background

The cystatin superfamily encompasses proteins that contain multiple cystatin-like sequences. Some of the members are

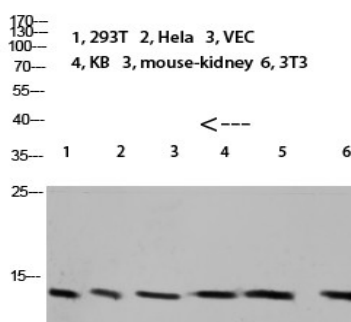
Product Name: Cystatin A Rabbit Polyclonal Antibody
Catalog #: APRab09691



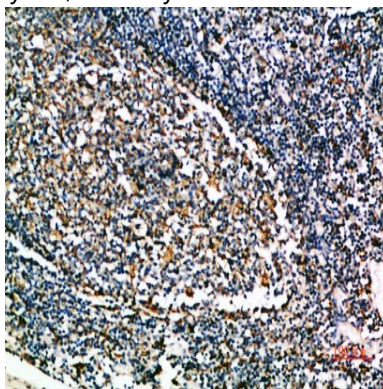
active cysteine protease inhibitors, while others have lost or perhaps never acquired this inhibitory activity. There are three inhibitory families in the superfamily, including the type 1 cystatins (stefins), type 2 cystatins, and kininogens. This gene encodes a stefin that functions as a cysteine protease inhibitor, forming tight complexes with papain and the cathepsins B, H, and L. The protein is one of the precursor proteins of cornified cell envelope in keratinocytes and plays a role in epidermal development and maintenance. Stefins have been proposed as prognostic and diagnostic tools for cancer. [provided by RefSeq, Jul 2008],function:This is an intracellular thiol proteinase inhibitor.,similarity:Belongs to the cystatin family.,

Research Area

Image Data

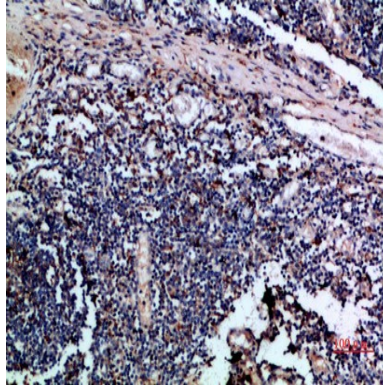


Western blot analysis of 293T mouse-kidney lysate, antibody was diluted at 1000. Secondary antibody was diluted at 1:20000

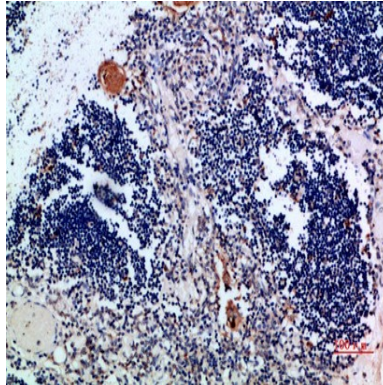


Immunohistochemical analysis of paraffin-embedded human-tonsil, antibody was diluted at 1:200

Product Name: Cystatin A Rabbit Polyclonal Antibody
Catalog #: APRab09691



Immunohistochemical analysis of paraffin-embedded human-tonsil, antibody was diluted at 1:200



Immunohistochemical analysis of paraffin-embedded human-thymus, antibody was diluted at 1:200

Note

For research use only.