

Summary

Production Name	Cystatin A Rabbit Polyclonal Antibody
Description	Rabbit Polyclonal Antibody
Host	Rabbit
Application	IF,IHC,WB,ELISA
Reactivity	Human,Rat,Mouse

Performance

Conjugation	Unconjugated
Modification	Unmodified
Isotype	IgG
Clonality	Polyclonal
Form	Liquid
Storage	Store at 4°C short term. Aliquot and store at -20°C long term. Avoid freeze/thaw cycles.
Buffer	Liquid in PBS containing 50% glycerol, 0.5% BSA and 0.02% New type preservative N.
Purification	Affinity purification

Immunogen

Gene Name	CSTA
Alternative Names	CSTA; STF1; STFA; Cystatin-A; Cystatin-AS; Stefin-A
Gene ID	1475.0
SwissProt ID	P01040.The antiserum was produced against synthesized peptide derived from human Stefin A. AA range:49-98

Application

Dilution Ratio	WB 1:500 - 1:2000. IHC 1:100 - 1:300. IF 1:200 - 1:1000. ELISA: 1:5000. Not yet tested in other applications.
Molecular Weight	11kD

Product Name: Cystatin A Rabbit Polyclonal Antibody
Catalog #: APRab09690

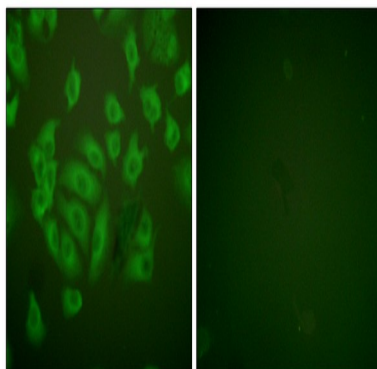


Background

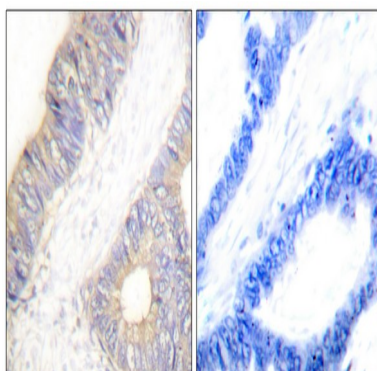
The cystatin superfamily encompasses proteins that contain multiple cystatin-like sequences. Some of the members are active cysteine protease inhibitors, while others have lost or perhaps never acquired this inhibitory activity. There are three inhibitory families in the superfamily, including the type 1 cystatins (stefins), type 2 cystatins, and kininogens. This gene encodes a stefin that functions as a cysteine protease inhibitor, forming tight complexes with papain and the cathepsins B, H, and L. The protein is one of the precursor proteins of cornified cell envelope in keratinocytes and plays a role in epidermal development and maintenance. Stefins have been proposed as prognostic and diagnostic tools for cancer. [provided by RefSeq, Jul 2008],function:This is an intracellular thiol proteinase inhibitor.,similarity:Belongs to the cystatin family,.

Research Area

Image Data

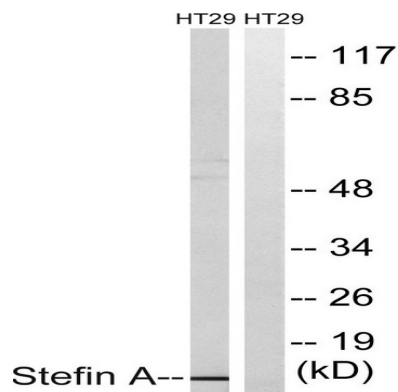


Immunofluorescence analysis of A549 cells, using Stefin A Antibody. The picture on the right is blocked with the synthesized peptide.



Immunohistochemistry analysis of paraffin-embedded human colon carcinoma tissue, using Stefin A Antibody. The picture on the right is blocked with the synthesized peptide.

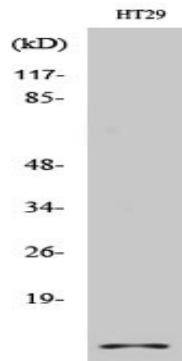
Product Name: Cystatin A Rabbit Polyclonal Antibody
Catalog #: APRab09690



Western blot analysis of lysates from HT29 cells, using Stefin A Antibody. The lane on the right is blocked with the synthesized peptide.



Western Blot analysis of various cells using Cystatin A Polyclonal Antibody



Western Blot analysis of HT29 cells using Cystatin A Polyclonal Antibody

Note

For research use only.