

Product Name: CYP4Z1/2 Rabbit Polyclonal Antibody
Catalog #: APRab09677



Summary

Production Name	CYP4Z1/2 Rabbit Polyclonal Antibody
Description	Rabbit Polyclonal Antibody
Host	Rabbit
Application	WB
Reactivity	Human,Rat,Mouse

Performance

Conjugation	Unconjugated
Modification	Unmodified
Isotype	IgG
Clonality	Polyclonal
Form	Liquid
Storage	Store at 4°C short term. Aliquot and store at -20°C long term. Avoid freeze/thaw cycles.
Buffer	Liquid in PBS containing 50% glycerol, 0.5% BSA and 0.02% New type preservative N.
Purification	Affinity purification

Immunogen

Gene Name	CYP4Z1/CYP4Z2P
Alternative Names	
Gene ID	199974.0
SwissProt ID	Q5VVE4/Q8N1L4.Synthesized peptide derived from the Internal region of human CYP4Z1/2.

Application

Dilution Ratio	WB 1:500-2000 ELISA: 1:40000.
Molecular Weight	

Background

catalytic activity:RH + reduced flavoprotein + O(2) = ROH + oxidized flavoprotein + H(2)O.,cofactor:Heme

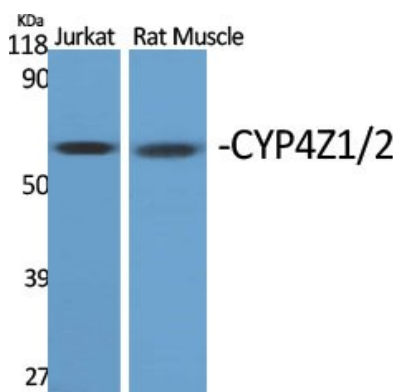
Product Name: CYP4Z1/2 Rabbit Polyclonal Antibody
Catalog #: APRab09677



group.,similarity:Belongs to the cytochrome P450 family.,tissue specificity:Preferentially detected in breast carcinoma tissue and mammary gland, whereas only marginal expression is found in all other tested tissues.,catalytic activity:RH + reduced flavoprotein + O(2) = ROH + oxidized flavoprotein + H(2)O.,cofactor:Heme group.,similarity:Belongs to the cytochrome P450 family.,tissue specificity:Preferentially detected in breast carcinoma tissue and mammary gland, whereas only marginal expression is found in all other tested tissues.,

Research Area

Image Data



Western Blot analysis of various cells using CYP4Z1/2 Polyclonal Antibody

Note

For research use only.