

---

## Summary

<b>Production Name</b>	CYP4X1 Rabbit Polyclonal Antibody
<b>Description</b>	Rabbit Polyclonal Antibody
<b>Host</b>	Rabbit
<b>Application</b>	IHC, WB, ELISA
<b>Reactivity</b>	Human, Monkey

## Performance

<b>Conjugation</b>	Unconjugated
<b>Modification</b>	Unmodified
<b>Isotype</b>	IgG
<b>Clonality</b>	Polyclonal
<b>Form</b>	Liquid
<b>Storage</b>	Store at 4°C short term. Aliquot and store at -20°C long term. Avoid freeze/thaw cycles.
<b>Buffer</b>	Liquid in PBS containing 50% glycerol, 0.5% BSA and 0.02% New type preservative N.
<b>Purification</b>	Affinity purification

## Immunogen

<b>Gene Name</b>	CYP4X1
<b>Alternative Names</b>	CYP4X1; Cytochrome P450 4X1; CYP4X1
<b>Gene ID</b>	260293.0
<b>SwissProt ID</b>	Q8N118. The antiserum was produced against synthesized peptide derived from human Cytochrome P450 4X1. AA range: 251-300

## Application

<b>Dilution Ratio</b>	WB 1:500 - 1:2000. IHC 1:100 - 1:300. ELISA: 1:40000..
<b>Molecular Weight</b>	50kD

## Background

---

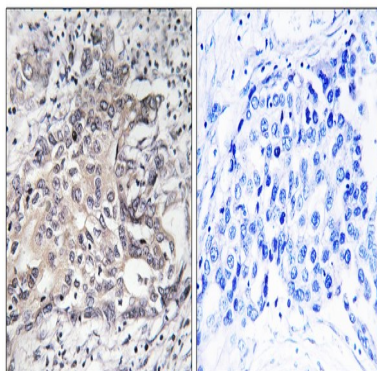
**Product Name: CYP4X1 Rabbit Polyclonal Antibody**  
**Catalog #: APRab09675**



This gene encodes a member of the cytochrome P450 superfamily of enzymes and is located within a cluster of genes belonging to this superfamily on chromosome 1. The cytochrome P450 proteins are monooxygenases which catalyze many reactions involved in drug metabolism and synthesis of cholesterol, steroids and other lipids. The expression pattern of a similar rat protein suggests that this protein may be involved in neurovascular function in the brain. Alternative splicing results in multiple transcript variants. [provided by RefSeq, Feb 2016],catalytic activity:RH + reduced flavoprotein + O(2) = ROH + oxidized flavoprotein + H(2)O.,cofactor:Heme group.,similarity:Belongs to the cytochrome P450 family,.

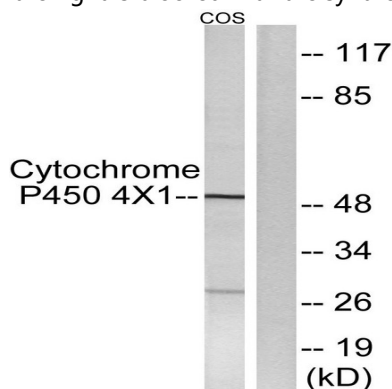
## Research Area

## Image Data



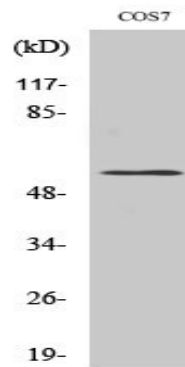
Immunohistochemistry analysis of paraffin-embedded human liver carcinoma tissue, using Cytochrome P450 4X1 Antibody.

The picture on the right is blocked with the synthesized peptide.



Western blot analysis of lysates from COS7 cells, using Cytochrome P450 4X1 Antibody. The lane on the right is blocked with the synthesized peptide.

**Product Name: CYP4X1 Rabbit Polyclonal Antibody**  
**Catalog #: APRab09675**



Western Blot analysis of various cells using CYP4X1 Polyclonal Antibody

**Note**

For research use only.