

Summary

Production Name	CYP2J2 Rabbit Polyclonal Antibody
Description	Rabbit Polyclonal Antibody
Host	Rabbit
Application	IF,IHC,WB,
Reactivity	Human,Monkey

Performance

Conjugation	Unconjugated
Modification	Unmodified
Isotype	IgG
Clonality	Polyclonal
Form	Liquid
Storage	Store at 4°C short term. Aliquot and store at -20°C long term. Avoid freeze/thaw cycles.
Buffer	Liquid in PBS containing 50% glycerol, 0.5% BSA and 0.02% New type preservative N.
Purification	Affinity purification

Immunogen

Gene Name	CYP2J2
Alternative Names	CYP2J2; Cytochrome P450 2J2; Arachidonic acid epoxygenase; CYP11J2
Gene ID	1573.0
SwissProt ID	P51589.The antiserum was produced against synthesized peptide derived from human Cytochrome P450 2J2. AA range:231-280

Application

Dilution Ratio	WB 1:500 - 1:2000 IHC 1:100 - 1:300. IF 1:200 - 1:1000. ELISA: 1:10000. Not yet tested in other applications.
Molecular Weight	58kD

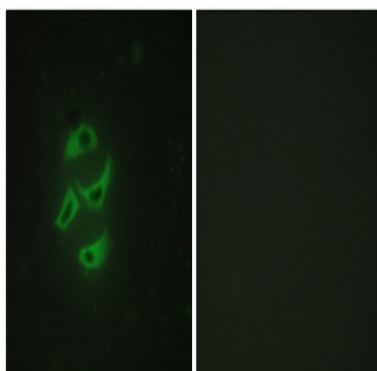
Background

This gene encodes a member of the cytochrome P450 superfamily of enzymes. The cytochrome P450 proteins are monooxygenases which catalyze many reactions involved in drug metabolism and synthesis of cholesterol, steroids and other lipids. This protein localizes to the endoplasmic reticulum and is thought to be the predominant enzyme responsible for epoxidation of endogenous arachidonic acid in cardiac tissue. Multiple transcript variants have been found for this gene. [provided by RefSeq, Jan 2016],catalytic activity:RH + reduced flavoprotein + O(2) = ROH + oxidized flavoprotein + H(2)O.,cofactor:Heme group.,function:This enzyme metabolizes arachidonic acid predominantly via a NADPH-dependent olefin epoxidation to all four regioisomeric cis-epoxyeicosatrienoic acids. One of the predominant enzymes responsible for the epoxidation of endogenous cardiac arachidonic acid pools.,online information:CYP2J2 alleles,similarity:Belongs to the cytochrome P450 family.,tissue specificity:Highly expressed in heart, present at lower levels in liver, ileum, jejunum, colon, and kidney.,

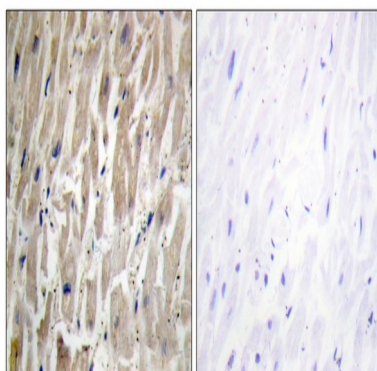
Research Area

Arachidonic acid metabolism;Linoleic acid metabolism;

Image Data



Immunofluorescence analysis of HepG2 cells, using Cytochrome P450 2J2 Antibody. The picture on the right is blocked with the synthesized peptide.

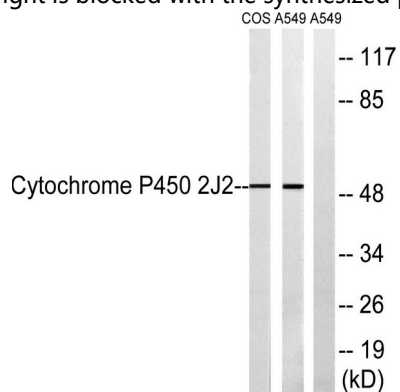


Immunohistochemistry analysis of paraffin-embedded human heart tissue, using Cytochrome P450 2J2 Antibody. The picture

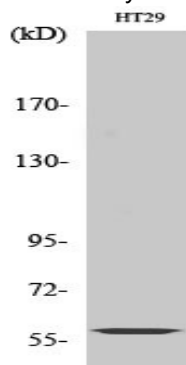
Product Name: CYP2J2 Rabbit Polyclonal Antibody
Catalog #: APRab09658



on the right is blocked with the synthesized peptide.



Western blot analysis of lysates from A549 and COS7 cells, using Cytochrome P450 2J2 Antibody. The lane on the right is blocked with the synthesized peptide.



Western Blot analysis of various cells using CYP2J2 Polyclonal Antibody

Note

For research use only.