

## Summary

<b>Production Name</b>	CYP2E1 Rabbit Polyclonal Antibody
<b>Description</b>	Rabbit Polyclonal Antibody
<b>Host</b>	Rabbit
<b>Application</b>	IF,IHC,WB,ELISA
<b>Reactivity</b>	Human,Mouse,Rat

## Performance

<b>Conjugation</b>	Unconjugated
<b>Modification</b>	Unmodified
<b>Isotype</b>	IgG
<b>Clonality</b>	Polyclonal
<b>Form</b>	Liquid
<b>Storage</b>	Store at 4°C short term. Aliquot and store at -20°C long term. Avoid freeze/thaw cycles.
<b>Buffer</b>	Liquid in PBS containing 50% glycerol, 0.5% BSA and 0.02% New type preservative N.
<b>Purification</b>	Affinity purification

## Immunogen

<b>Gene Name</b>	CYP2E1
<b>Alternative Names</b>	CYP2E1; CYP2E; Cytochrome P450 2E1; 4-nitrophenol 2-hydroxylase; CYP11E1; Cytochrome P450-J
<b>Gene ID</b>	1571.0
<b>SwissProt ID</b>	P05181.The antiserum was produced against synthesized peptide derived from human Cytochrome P450 2E1. AA range:371-420

## Application

<b>Dilution Ratio</b>	WB 1:500 - 1:2000. IHC 1:100 - 1:300. IF 1:200 - 1:1000. ELISA: 1:5000. Not yet tested in other applications.
<b>Molecular Weight</b>	56kD

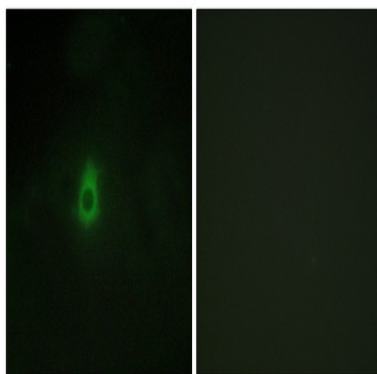
## Background

This gene encodes a member of the cytochrome P450 superfamily of enzymes. The cytochrome P450 proteins are monooxygenases which catalyze many reactions involved in drug metabolism and synthesis of cholesterol, steroids and other lipids. This protein localizes to the endoplasmic reticulum and is induced by ethanol, the diabetic state, and starvation. The enzyme metabolizes both endogenous substrates, such as ethanol, acetone, and acetal, as well as exogenous substrates including benzene, carbon tetrachloride, ethylene glycol, and nitrosamines which are premutagens found in cigarette smoke. Due to its many substrates, this enzyme may be involved in such varied processes as gluconeogenesis, hepatic cirrhosis, diabetes, and cancer. [provided by RefSeq, Jul 2008],catalytic activity:4-nitrophenol + NADPH + O(2) = 4-nitrocatechol + NADP(+) + H(2)O.,cofactor:Heme group.,function:Metabolizes several precarcinogens, drugs, and solvents to reactive metabolites. Inactivates a number of drugs and xenobiotics and also bioactivates many xenobiotic substrates to their hepatotoxic or carcinogenic forms.,induction:By ethanol and isoniazid.,online information:CYP2E1 alleles,online information:CYP2E1 entry,similarity:Belongs to the cytochrome P450 family.,

## Research Area

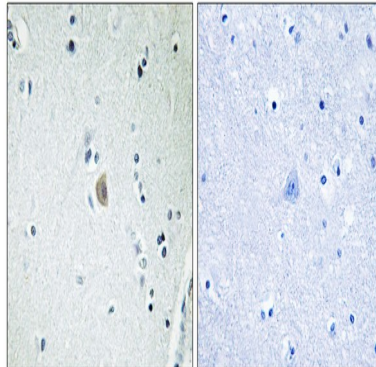
Arachidonic acid metabolism;Linoleic acid metabolism;Metabolism of xenobiotics by cytochrome P450;Drug metabolism;

## Image Data

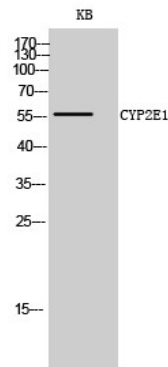


Immunofluorescence analysis of HepG2 cells, using Cytochrome P450 2E1 Antibody. The picture on the right is blocked with the synthesized peptide.

**Product Name: CYP2E1 Rabbit Polyclonal Antibody**  
**Catalog #: APRab09657**



Immunohistochemistry analysis of paraffin-embedded human brain tissue, using Cytochrome P450 2E1 Antibody. The picture on the right is blocked with the synthesized peptide.



Western Blot analysis of KB cells using CYP2E1 Polyclonal Antibody diluted at 1: 500

## Note

For research use only.