

Summary

Production Name	CYP26A1 Rabbit Polyclonal Antibody
Description	Rabbit Polyclonal Antibody
Host	Rabbit
Application	WB,ELISA
Reactivity	Human,Mouse,Rat

Performance

Conjugation	Unconjugated
Modification	Unmodified
Isotype	IgG
Clonality	Polyclonal
Form	Liquid
Storage	Store at 4°C short term. Aliquot and store at -20°C long term. Avoid freeze/thaw cycles.
Buffer	Liquid in PBS containing 50% glycerol, 0.5% BSA and 0.02% New type preservative N.
Purification	Affinity purification

Immunogen

Gene Name	CYP26A1
Alternative Names	CYP26A1; CYP26; P450RAI1; Cytochrome P450 26A1; Cytochrome P450 retinoic acid-inactivating 1; Cytochrome P450RAI; hP450RAI; Retinoic acid 4-hydroxylase; Retinoic acid-metabolizing cytochrome
Gene ID	1592.0
SwissProt ID	O43174.The antiserum was produced against synthesized peptide derived from human Cytochrome P450 26A1. AA range:251-300

Application

Dilution Ratio	WB 1:500 - 1:2000. ELISA: 1:20000. Not yet tested in other applications.
Molecular Weight	56kD

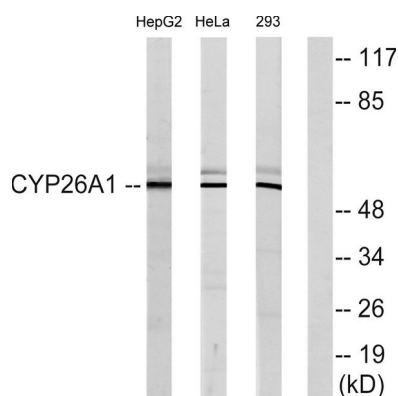
Background

cytochrome P450 family 26 subfamily A member 1(CYP26A1) Homo sapiens This gene encodes a member of the cytochrome P450 superfamily of enzymes. The cytochrome P450 proteins are monooxygenases which catalyze many reactions involved in drug metabolism and synthesis of cholesterol, steroids and other lipids. This endoplasmic reticulum protein acts on retinoids, including all-trans-retinoic acid (RA), with both 4-hydroxylation and 18-hydroxylation activities. This enzyme regulates the cellular level of retinoic acid which is involved in regulation of gene expression in both embryonic and adult tissues. Two alternatively spliced transcript variants of this gene, which encode the distinct isoforms, have been reported. [provided by RefSeq, Jul 2008],cofactor:Heme group.,function:Plays a key role in retinoic acid metabolism. Acts on retinoids, including all-trans-retinoic acid (RA) and its stereoisomer 9-cis-RA. Capable of both 4-hydroxylation and 18-hydroxylation. Responsible for generation of several hydroxylated forms of RA, including 4-OH-RA, 4-oxo-RA and 18-OH-RA.,induction:By retinoic acid.,similarity:Belongs to the cytochrome P450 family.,tissue specificity:Highest levels in adult liver, heart, pituitary gland, adrenal gland, placenta and regions of the brain.,

Research Area

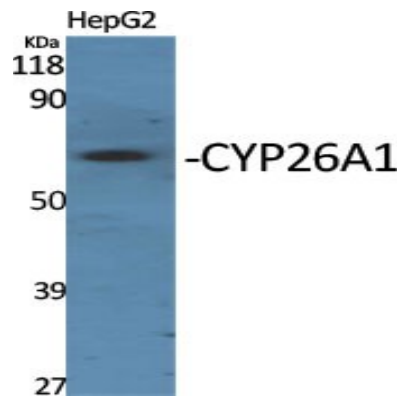
Retinol metabolism;

Image Data

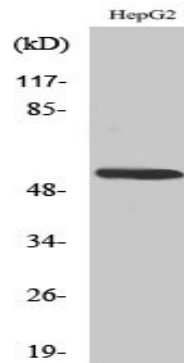


Western blot analysis of lysates from HepG2, HeLa, and 293 cells, using Cytochrome P450 26A1 Antibody. The lane on the right is blocked with the synthesized peptide.

Product Name: CYP26A1 Rabbit Polyclonal Antibody
Catalog #: APRab09638



Western Blot analysis of various cells using CYP26A1 Polyclonal Antibody diluted at 1: 1000



Western Blot analysis of 293 cells using CYP26A1 Polyclonal Antibody diluted at 1: 1000

Note

For research use only.