

## Summary

<b>Production Name</b>	CYP19A1 Rabbit Polyclonal Antibody
<b>Description</b>	Rabbit Polyclonal Antibody
<b>Host</b>	Rabbit
<b>Application</b>	WB,IHC,IF,ELISA
<b>Reactivity</b>	Human,Mouse,Rat

## Performance

<b>Conjugation</b>	Unconjugated
<b>Modification</b>	Unmodified
<b>Isotype</b>	IgG
<b>Clonality</b>	Polyclonal
<b>Form</b>	Liquid
<b>Storage</b>	Store at 4°C short term. Aliquot and store at -20°C long term. Avoid freeze/thaw cycles.
<b>Buffer</b>	Liquid in PBS containing 50% glycerol, 0.5% BSA and 0.02% New type preservative N.
<b>Purification</b>	Affinity purification

## Immunogen

<b>Gene Name</b>	CYP19A1
<b>Alternative Names</b>	CYP19A1; ARO1; CYAR; CYP19; Cytochrome P450 19A1; Aromatase; CYPXIX; Cytochrome P-450AROM; Estrogen synthase
<b>Gene ID</b>	1588.0
<b>SwissProt ID</b>	P11511.The antiserum was produced against synthesized peptide derived from human Cytochrome P450 19A1. AA range:221-270

## Application

<b>Dilution Ratio</b>	WB 1:500 - 1:2000. IHC 1:100 - 1:300. IF 1:200 - 1:1000. ELISA: 1:20000. Not yet tested in other applications.
<b>Molecular Weight</b>	53kD

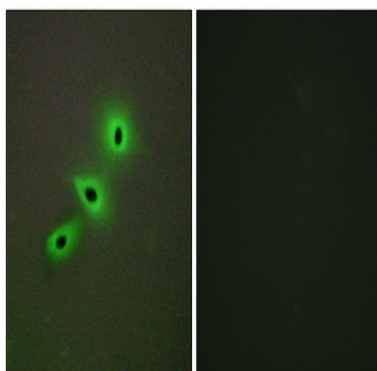
## Background

cytochrome P450 family 19 subfamily A member 1(CYP19A1) Homo sapiens This gene encodes a member of the cytochrome P450 superfamily of enzymes. The cytochrome P450 proteins are monooxygenases which catalyze many reactions involved in drug metabolism and synthesis of cholesterol, steroids and other lipids. This protein localizes to the endoplasmic reticulum and catalyzes the last steps of estrogen biosynthesis. Mutations in this gene can result in either increased or decreased aromatase activity; the associated phenotypes suggest that estrogen functions both as a sex steroid hormone and in growth or differentiation. Alternative splicing results in multiple transcript variants. [provided by RefSeq, May 2014],catalytic activity:RH + reduced flavoprotein + O(2) = ROH + oxidized flavoprotein + H(2)O.,cofactor:Heme group.,disease:Defects in CYP19A1 are a cause of familial gynecomastia [MIM:139300]. This is characterized by an estrogen excess due to an increased aromatase activity.,disease:Defects in CYP19A1 are the cause of aromatase deficiency (AROD) [MIM:107910]. AROD is a rare disease in which fetal androgens are not converted into estrogens due to placental aromatase deficiency. Thus, pregnant women exhibit a hirsutism, which spontaneously resolves after post-partum. At birth, female babies present with pseudohermaphroditism due to virilization of extern genital organs. In adult females, manifestations include delay of puberty, breast hypoplasia and primary amenorrhoea with multicystic ovaries.,function:Catalyzes the formation of aromatic C18 estrogens from C19 androgens.,online information:Aromatase entry,similarity:Belongs to the cytochrome P450 family.,tissue specificity:Brain, placenta and gonads.,

## Research Area

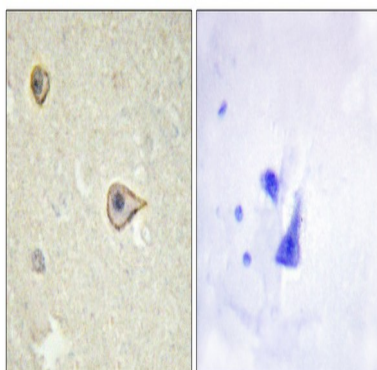
Steroid hormone biosynthesis;Androgen and estrogen metabolism;

## Image Data

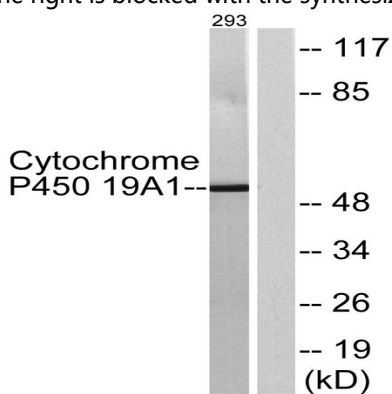


Immunofluorescence analysis of A549 cells, using Cytochrome P450 19A1 Antibody. The picture on the right is blocked with the synthesized peptide.

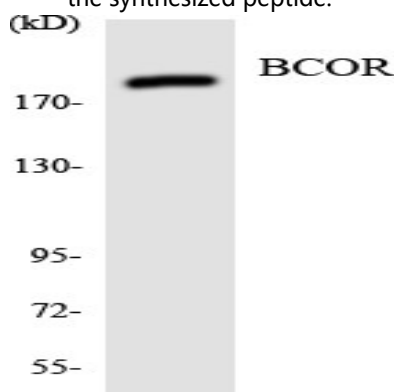
Product Name: CYP19A1 Rabbit Polyclonal Antibody  
Catalog #: APRab09628



Immunohistochemistry analysis of paraffin-embedded human brain tissue, using Cytochrome P450 19A1 Antibody. The picture on the right is blocked with the synthesized peptide.

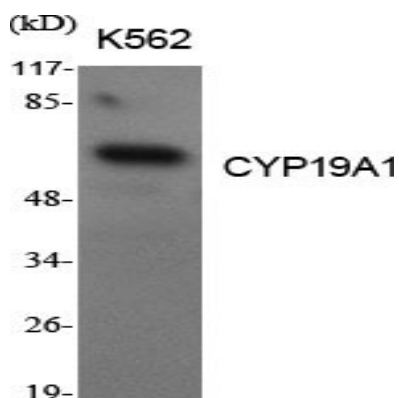


Western blot analysis of lysates from 293 cells, using Cytochrome P450 19A1 Antibody. The lane on the right is blocked with the synthesized peptide.

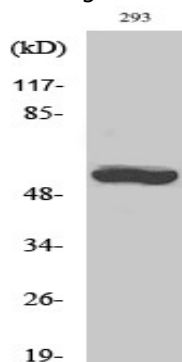


Western blot analysis of the lysates from HeLa cells using BCOR antibody.

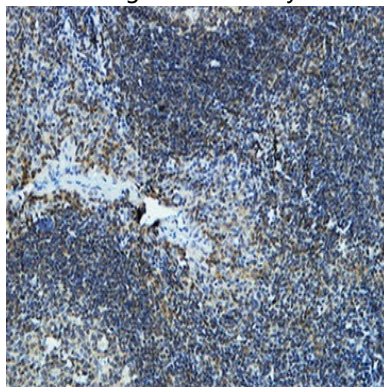
**Product Name: CYP19A1 Rabbit Polyclonal Antibody**  
**Catalog #: APRab09628**



Western Blot analysis of various cells using CYP19A1 Polyclonal Antibody diluted at 1: 1000

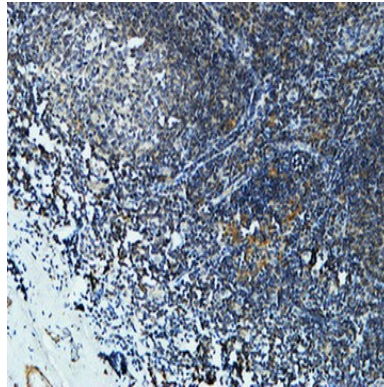


Western Blot analysis of 293 cells using CYP19A1 Polyclonal Antibody diluted at 1: 1000

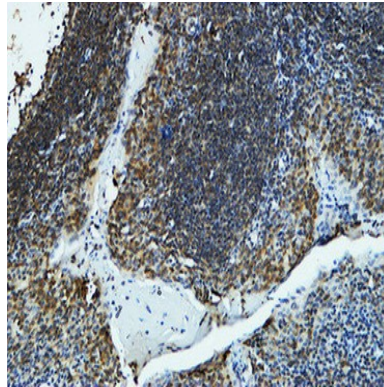


Immunohistochemical analysis of paraffin-embedded Human Amygdala. 1, Antibody was diluted at 1:100 (4°,overnight) . 2, High-pressure and temperature EDTA, pH8.0 was used for antigen retrieval. 3,Secondary antibody was diluted at 1:200 (room temperature, 30min) .

**Product Name: CYP19A1 Rabbit Polyclonal Antibody**  
**Catalog #: APRab09628**



Immunohistochemical analysis of paraffin-embedded Human Amygdala. 1, Antibody was diluted at 1:100 (4°,overnight) . 2, High-pressure and temperature EDTA, pH8.0 was used for antigen retrieval. 3,Secondary antibody was diluted at 1:200 (room temperature, 30min) .



Immunohistochemical analysis of paraffin-embedded Human Amygdala. 1, Antibody was diluted at 1:100 (4°,overnight) . 2, High-pressure and temperature EDTA, pH8.0 was used for antigen retrieval. 3,Secondary antibody was diluted at 1:200 (room temperature, 30min) .

## **Note**

For research use only.