

Summary

Production Name	Cyclophilin F Rabbit Polyclonal Antibody
Description	Rabbit Polyclonal Antibody
Host	Rabbit
Application	IHC, WB,
Reactivity	Human, Mouse, Rat

Performance

Conjugation	Unconjugated
Modification	Unmodified
Isotype	IgG
Clonality	Polyclonal
Form	Liquid
Storage	Store at 4°C short term. Aliquot and store at -20°C long term. Avoid freeze/thaw cycles.
Buffer	Liquid in PBS containing 50% glycerol, 0.5% BSA and 0.02% New type preservative N.
Purification	Affinity purification

Immunogen

Gene Name	PPIF
Alternative Names	PPIF; CYP3; Peptidyl-prolyl cis-trans isomerase F; mitochondrial; PPlase F; Cyclophilin F; Rotamase F
Gene ID	10105.0
SwissProt ID	P30405. The antiserum was produced against synthesized peptide derived from human PPIF. AA range:86-135

Application

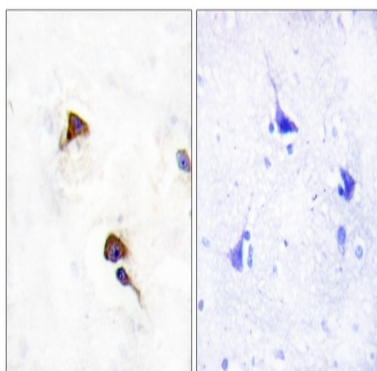
Dilution Ratio	WB 1:500 - 1:2000. IHC 1:100 - 1:300. ELISA: 1:20000. Not yet tested in other applications.
Molecular Weight	22kD

Background

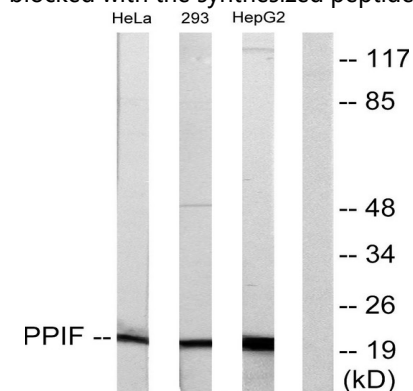
The protein encoded by this gene is a member of the peptidyl-prolyl cis-trans isomerase (PPIase) family. PPIases catalyze the cis-trans isomerization of proline imidic peptide bonds in oligopeptides and accelerate the folding of proteins. This protein is part of the mitochondrial permeability transition pore in the inner mitochondrial membrane. Activation of this pore is thought to be involved in the induction of apoptotic and necrotic cell death. [provided by RefSeq, Jul 2008], catalytic activity: Peptidylproline (omega=180) = peptidylproline (omega=0), function: PPIases accelerate the folding of proteins, function: PPIases accelerate the folding of proteins. It catalyzes the cis-trans isomerization of proline imidic peptide bonds in oligopeptides, similarity: Belongs to the cyclophilin-type PPIase family, similarity: Contains 1 PPIase cyclophilin-type domain,

Research Area

Image Data

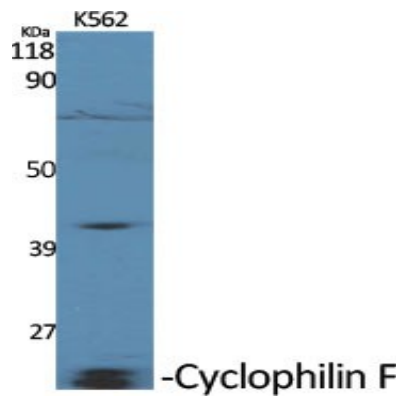


Immunohistochemistry analysis of paraffin-embedded human brain tissue, using PPIF Antibody. The picture on the right is blocked with the synthesized peptide.



Western blot analysis of lysates from HepG2, HeLa, and 293 cells, using PPIF Antibody. The lane on the right is blocked with the synthesized peptide.

Product Name: Cyclophilin F Rabbit Polyclonal Antibody
Catalog #: APRab09612



Western Blot analysis of various cells using Cyclophilin F Polyclonal Antibody diluted at 1 : 2000



Western Blot analysis of HuvEc cells using Cyclophilin F Polyclonal Antibody diluted at 1 : 2000

Note

For research use only.