

Summary

Production Name	Cyclin G Rabbit Polyclonal Antibody
Description	Rabbit Polyclonal Antibody
Host	Rabbit
Application	IHC, WB, ELISA
Reactivity	Human, Mouse, Rat

Performance

Conjugation	Unconjugated
Modification	Unmodified
Isotype	IgG
Clonality	Polyclonal
Form	Liquid
Storage	Store at 4°C short term. Aliquot and store at -20°C long term. Avoid freeze/thaw cycles.
Buffer	Liquid in PBS containing 50% glycerol, 0.5% BSA and 0.02% New type preservative N.
Purification	Affinity purification

Immunogen

Gene Name	CCNG1
Alternative Names	CCNG1; CCNG; CYCG1; Cyclin-G1; Cyclin-G
Gene ID	900.0
SwissProt ID	P51959. The antiserum was produced against synthesized peptide derived from human Cyclin G. AA range: 161-210

Application

Dilution Ratio	WB 1:500 - 1:2000. IHC 1:100 - 1:300. ELISA: 1:40000..
Molecular Weight	29kD

Background

Product Name: Cyclin G Rabbit Polyclonal Antibody
Catalog #: APRab09600

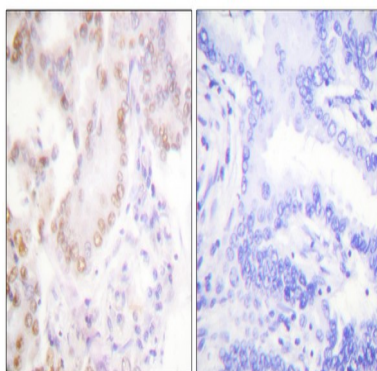


The eukaryotic cell cycle is governed by cyclin-dependent protein kinases (CDKs) whose activities are regulated by cyclins and CDK inhibitors. The protein encoded by this gene is a member of the cyclin family and contains the cyclin box. The encoded protein lacks the protein destabilizing (PEST) sequence that is present in other family members. Transcriptional activation of this gene can be induced by tumor protein p53. Two transcript variants encoding the same protein have been identified for this gene. [provided by RefSeq, Jul 2008],developmental stage:Very low levels in normal cells during G1 phase, which increase as cells enter the S phase and stay high throughout the S and G2/M phases. In breast cancer cells consistent high levels are found throughout the cell cycle.,function:May play a role in growth regulation. Is associated with G2/M phase arrest in response to DNA damage. May be an intermediate by which p53 mediates its role as an inhibitor of cellular proliferation.,induction:Activated in breast and prostate cancer cells. Activated by actinomycin-D induced DNA damage.,similarity:Belongs to the cyclin family. Cyclin G subfamily.,subcellular location:DNA replication foci after DNA damage.,tissue specificity:High levels in skeletal muscle, ovary, kidney and colon.,

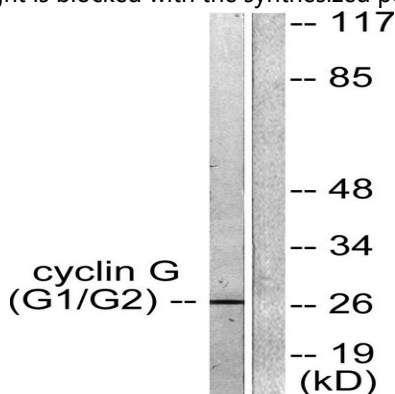
Research Area

p53;

Image Data

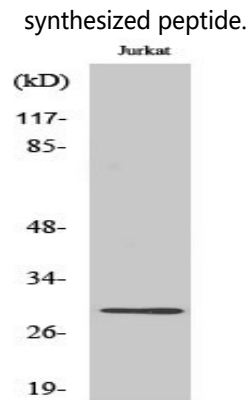


Immunohistochemistry analysis of paraffin-embedded human lung carcinoma tissue, using Cyclin G Antibody. The picture on the right is blocked with the synthesized peptide.



Western blot analysis of lysates from Jurkat cells, using Cyclin G Antibody. The lane on the right is blocked with the

Product Name: Cyclin G Rabbit Polyclonal Antibody
Catalog #: APRab09600



Western Blot analysis of various cells using Cyclin G Polyclonal Antibody diluted at 1: 500 cells nucleus extracted by Minute TM Cytoplasmic and Nuclear Fractionation kit (SC-003, Inventbiotech, MN, USA) .

Note

For research use only.