

---

## Summary

<b>Production Name</b>	Cyclin D3 Rabbit Polyclonal Antibody
<b>Description</b>	Rabbit Polyclonal Antibody
<b>Host</b>	Rabbit
<b>Application</b>	IHC, WB,
<b>Reactivity</b>	Human, Mouse, Rat, Monkey

## Performance

<b>Conjugation</b>	Unconjugated
<b>Modification</b>	Unmodified
<b>Isotype</b>	IgG
<b>Clonality</b>	Polyclonal
<b>Form</b>	Liquid
<b>Storage</b>	Store at 4°C short term. Aliquot and store at -20°C long term. Avoid freeze/thaw cycles.
<b>Buffer</b>	Liquid in PBS containing 50% glycerol, 0.5% BSA and 0.02% New type preservative N.
<b>Purification</b>	Affinity purification

## Immunogen

<b>Gene Name</b>	CCND3
<b>Alternative Names</b>	CCND3; G1/S-specific cyclin-D3
<b>Gene ID</b>	896.0
<b>SwissProt ID</b>	P30281. The antiserum was produced against synthesized peptide derived from human Cyclin D3. AA range: 243-292

## Application

<b>Dilution Ratio</b>	WB 1:500 - 1:2000. IHC 1:100 - 1:300. ELISA: 1:5000..
<b>Molecular Weight</b>	32kD

## Background

---

**Product Name: Cyclin D3 Rabbit Polyclonal Antibody**  
**Catalog #: APRab09592**

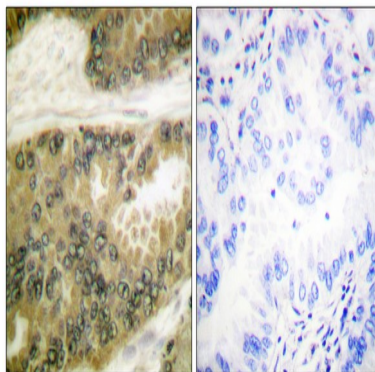


The protein encoded by this gene belongs to the highly conserved cyclin family, whose members are characterized by a dramatic periodicity in protein abundance through the cell cycle. Cyclins function as regulators of CDK kinases. Different cyclins exhibit distinct expression and degradation patterns which contribute to the temporal coordination of each mitotic event. This cyclin forms a complex with and functions as a regulatory subunit of CDK4 or CDK6, whose activity is required for cell cycle G1/S transition. This protein has been shown to interact with and be involved in the phosphorylation of tumor suppressor protein Rb. The CDK4 activity associated with this cyclin was reported to be necessary for cell cycle progression through G2 phase into mitosis after UV radiation. Several transcript variants encoding different isoforms have been found for this gene. [provided by RefSeq, Oct 2008],function:Essential for the control of the cell cycle at the G1/S (start) transition. Potentiates the transcriptional activity of ATF5.,similarity:Belongs to the cyclin family.,similarity:Belongs to the cyclin family. Cyclin D subfamily.,subunit:Interacts with the CDK4 and CDK6 protein kinases to form a serine/threonine kinase holoenzyme complex. The cyclin subunit imparts substrate specificity to the complex. Interacts with ATF5. Interacts with EIF3K.,

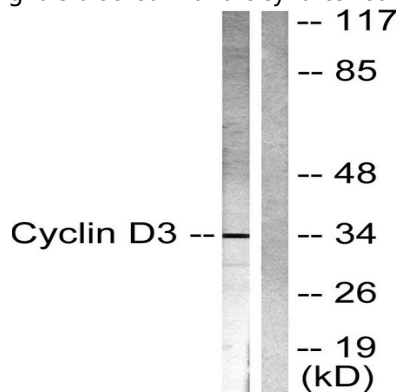
**Research Area**

Cell\_Cycle\_G1S;Cell\_Cycle\_G2M\_DNA;p53;WNT;WNT-T CELLFocal adhesion;Jak\_STAT;

**Image Data**



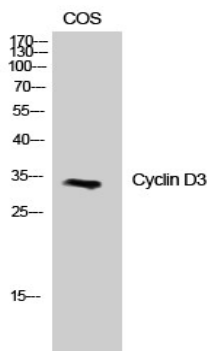
Immunohistochemistry analysis of paraffin-embedded human lung carcinoma tissue, using Cyclin D3 Antibody. The picture on the right is blocked with the synthesized peptide.



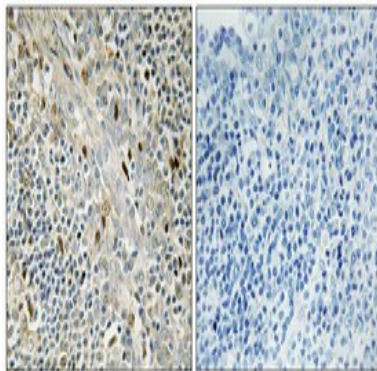
**Product Name: Cyclin D3 Rabbit Polyclonal Antibody**  
**Catalog #: APRab09592**



Western blot analysis of lysates from COS7 cells, treated with Forskolin 40nM 30', using Cyclin D3 Antibody. The lane on the right is blocked with the synthesized peptide.



Western Blot analysis of COS7 cells using Cyclin D3 Polyclonal Antibody



Immunohistochemical analysis of paraffin-embedded Human tonsil. Antibody was diluted at 1:100 (4°, overnight). High-pressure and temperature Tris-EDTA, pH 8.0 was used for antigen retrieval. Negative control (right) obtained from antibody was pre-absorbed by immunogen peptide.

## Note

For research use only.