

Product Name: CYB561D1 Rabbit Polyclonal Antibody
Catalog #: APRab09570



Summary

Production Name	CYB561D1 Rabbit Polyclonal Antibody
Description	Rabbit Polyclonal Antibody
Host	Rabbit
Application	WB,IF,ELISA
Reactivity	Human,Rat,Mouse

Performance

Conjugation	Unconjugated
Modification	Unmodified
Isotype	IgG
Clonality	Polyclonal
Form	Liquid
Storage	Store at 4°C short term. Aliquot and store at -20°C long term. Avoid freeze/thaw cycles.
Buffer	Liquid in PBS containing 50% glycerol, 0.5% BSA and 0.02% New type preservative N.
Purification	Affinity purification

Immunogen

Gene Name	CYB561D1
Alternative Names	CYB561D1; Cytochrome b561 domain-containing protein 1
Gene ID	284613.0
SwissProt ID	Q8N8Q1.The antiserum was produced against synthesized peptide derived from human CYB561D1. AA range:180-229

Application

Dilution Ratio	WB 1:500 - 1:2000. IF 1:200 - 1:1000. ELISA: 1:40000. Not yet tested in other applications.
Molecular Weight	23kD

Product Name: CYB561D1 Rabbit Polyclonal Antibody
Catalog #: APRab09570

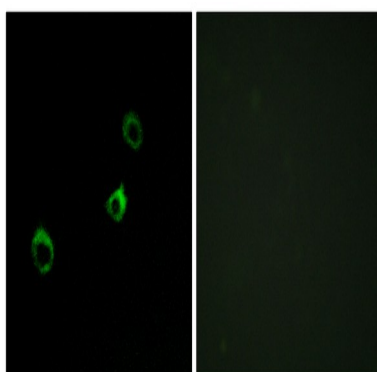


Background

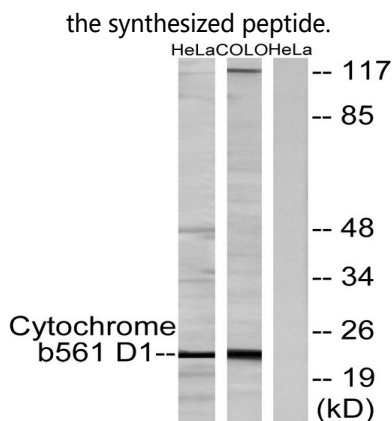
cofactor: Binds 2 heme groups non-covalently, similarity: Contains 1 cytochrome b561 domain, cofactor: Binds 2 heme groups non-covalently, similarity: Contains 1 cytochrome b561 domain,

Research Area

Image Data



Immunofluorescence analysis of MCF-7 cells, using Cytochrome b561 D1 Antibody. The picture on the right is blocked with the synthesized peptide.



Western blot analysis of lysates from HeLa cells and COLO205 cells, using Cytochrome b561 D1 Antibody. The lane on the right is blocked with the synthesized peptide.

Note

For research use only.