

Product Name: CUX1 Rabbit Polyclonal Antibody
Catalog #: APRab09544



Summary

Production Name	CUX1 Rabbit Polyclonal Antibody
Description	Rabbit Polyclonal Antibody
Host	Rabbit
Application	WB,ELISA
Reactivity	Human,Mouse

Performance

Conjugation	Unconjugated
Modification	Unmodified
Isotype	IgG
Clonality	Polyclonal
Form	Liquid
Storage	Store at 4°C short term. Aliquot and store at -20°C long term. Avoid freeze/thaw cycles.
Buffer	Liquid in PBS containing 50% glycerol, 0.5% BSA and 0.02% New type preservative N.
Purification	Affinity purification

Immunogen

Gene Name	CUX1
Alternative Names	CUX1; CUTL1; Homeobox protein cut-like 1; CCAAT displacement protein; CDP; Homeobox protein cux-1; CUX1; CUTL1; Protein CASP
Gene ID	1523.0
SwissProt ID	P39880/Q13948.The antiserum was produced against synthesized peptide derived from human CUTL1. AA range:10-59

Application

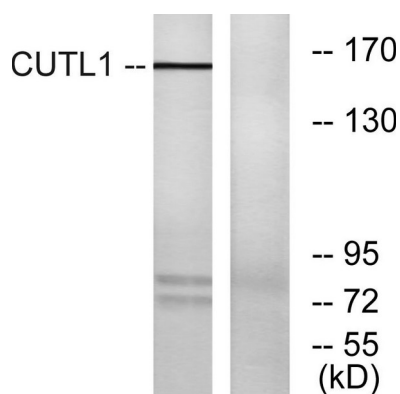
Dilution Ratio	WB 1:500 - 1:2000. ELISA: 1:40000. Not yet tested in other applications.
Molecular Weight	164kD

Background

The protein encoded by this gene is a member of the homeodomain family of DNA binding proteins. It may regulate gene expression, morphogenesis, and differentiation and it may also play a role in the cell cycle progression. Several alternatively spliced transcript variants encoding different isoforms have been identified.[provided by RefSeq, Feb 2011],alternative products:Additional isoforms seem to exist,function:May be involved in intra-Golgi retrograde transport.,function:Probably has a broad role in mammalian development as a repressor of developmentally regulated gene expression. May act by preventing binding of positively-activating CCAAT factors to promoters. Component of nf-munr repressor; binds to the matrix attachment regions (MARs) (5' and 3') of the immunoglobulin heavy chain enhancer. Represses T-cell receptor (TCR) beta enhancer function by binding to MARbeta, an ATC-rich DNA sequence located upstream of the TCR beta enhancer.,miscellaneous:Asn-1290 may participate in regulating DNA-binding activity by promoting homo- and heterodimerization.,PTM:Phosphorylated upon DNA damage, probably by ATM or ATR.,similarity:Belongs to the CASP family.,similarity:Belongs to the CUT homeobox family.,similarity:Contains 1 homeobox DNA-binding domain.,similarity:Contains 3 CUT DNA-binding domains.,subunit:Homodimer; disulfide-linked. Interacts with GOLGA5.,subunit:Interacts with BANP.,

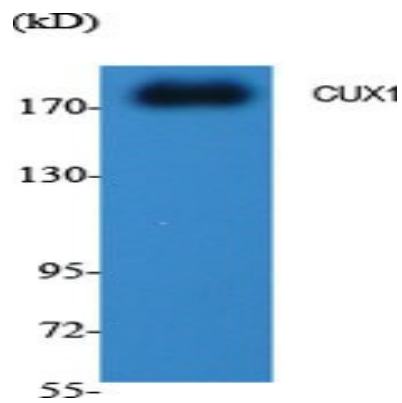
Research Area

Image Data

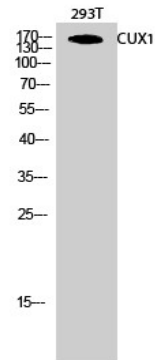


Western blot analysis of lysates from K562 cells, using CUTL1 Antibody. The lane on the right is blocked with the synthesized peptide.

Product Name: CUX1 Rabbit Polyclonal Antibody
Catalog #: APRab09544



Western Blot analysis of various cells using CUX1 Polyclonal Antibody diluted at 1: 1000



Western Blot analysis of 293T cells using CUX1 Polyclonal Antibody diluted at 1: 1000

Note

For research use only.