

Product Name: CTXL Rabbit Polyclonal Antibody
Catalog #: APRab09522



Summary

Production Name	CTXL Rabbit Polyclonal Antibody
Description	Rabbit Polyclonal Antibody
Host	Rabbit
Application	WB
Reactivity	Human,Rat,Mouse

Performance

Conjugation	Unconjugated
Modification	Unmodified
Isotype	IgG
Clonality	Polyclonal
Form	Liquid
Storage	Store at 4°C short term. Aliquot and store at -20°C long term. Avoid freeze/thaw cycles.
Buffer	Liquid in PBS containing 50% glycerol, 0.5% BSA and 0.02% New type preservative N.
Purification	Affinity purification

Immunogen

Gene Name	VSIG2 CTH CTXL UNQ2770/PRO7154
Alternative Names	V-set and immunoglobulin domain-containing protein 2 (Cortical thymocyte-like protein) (CT-like protein)
Gene ID	23584.0
SwissProt ID	Q96IQ7.Synthesized peptide derived from human CTXL. at AA range: 260-290

Application

Dilution Ratio	WB 1:500-2000, ELISA 1:10000-20000
Molecular Weight	34kD

Background

similarity:Contains 1 Ig-like C2-type (immunoglobulin-like) domain.,similarity:Contains 1 Ig-like V-type (immunoglobulin-

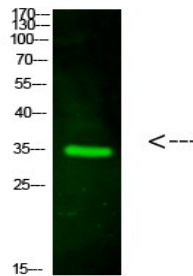
Product Name: CTXL Rabbit Polyclonal Antibody
Catalog #: APRab09522



like) domain.,tissue specificity:Highly expressed in stomach, colon, prostate, trachea and thyroid glands and weakly in bladder and lung.,similarity:Contains 1 Ig-like C2-type (immunoglobulin-like) domain.,similarity:Contains 1 Ig-like V-type (immunoglobulin-like) domain.,tissue specificity:Highly expressed in stomach, colon, prostate, trachea and thyroid glands and weakly in bladder and lung.,

Research Area

Image Data



Western Blot analysis of hela cells using primary antibody diluted at 1:1000 (4°C overnight) . Secondary antibody: Goat Anti-rabbit IgG IRDye 800 (diluted at 1:5000, 25°C, 1 hour)

Note

For research use only.